

## BT1 Family

**7 Weights in BT1 Family:**

Thin, Light, Regular, DemiBold, Bold, Heavy, Extra-Condensed Heavy  
Thin Italic, Light Italic, Italic, DemiBold Italic, Bold Italic, Heavy Italic

**Design:** Jonas Hecksher, 2011  
**Published:** 2011  
**Version no.** 1.001/2011  
**Character set:** PRO

Playtype™ is an online type foundry and concept store, created as a place to play, a home for experimentation and a showcase of our craft.

BT1 Thin  
BT1 Light  
BT1 Regular  
BT1 DemiBold  
BT1 Bold  
BT1 Heavy

## BT1 Extra-Condensed Heavy

*BT1 Thin Italic*  
*BT1 Light Italic*  
*BT1 Italic*  
*BT1 DemiBold Italic*  
*BT1 Bold Italic*  
*BT1 Heavy Italic*

10/12 Point

**THE ART DIRECTORS CHOICE, originally designed for newspaper headers with very expressive weights: DemiBold, Bold and Extra-Condensed Heavy. 'BT1' is among the most expressive sans serif typefaces made today with its shape rooted in the super elliptic form. The diversity of weights — thin to Extra-Condensed Heavy — creates a wide range of very creative possibilities for all communication platforms.**

**Character set: PRO**

Basic Latin  
Latin 1: Supplement  
Latin 2: Eastern Europe  
Latin Extended A  
Latin Extended B  
Spacing Modifier Letters  
Combining Diacritical Marks  
Proportional Lining Figures  
Proportional Oldstyle Figures  
Fractions  
General Punctuation  
Currency Symbols  
Letterlike Symbols  
Number Forms  
Turkish  
Small Caps

**BT1 Extra-Condensed**

**Heavy only**  
Greek  
Cyrillic  
Latin Extended Additional  
Greek Extended  
Baltic  
Vietnamese

**The font will cover 100 languages**

Afar, Afrikaans, Albanian, Aragonese, Aymara, Basque, Bislama, Bosnian (Latin Script), Breton, Catalan, Chamorro, Cornish, Corsican, Croatian, Czech, Danish, Dutch, English, Esperanto, Estonian, Faroese, Fijian, Finnish, French, Galician, Ganda, German, Greenlandic, Haitian, Hungarian, Icelandic, Ido, Indonesian, Interlingua, Interlingue, Irish (new orthography), Italian, Javanese, Kazakh (Latin Script), Kikuyu, Kinyarwanda, Kirundi, Kongo, Kuanyama, Kurdish (Latin Script), Latin (basic classical orthography), Latvian, Limburgish, Lithuanian, Luxembourgish, Malagasy, Malay (Latin Script), Maltese, Manx, Moldovan (Latin Script), Nauruan, Navajo, Northern Sami, North Ndebele, Norwegian (Bokmål and Nynorsk), Occitan, Oromo, Polish, Portuguese, Quechua, Raeto-Romance, Romanian, Samoan, Sardinian, Scottish Gaelic, Serbian (Latin Script), Shona, Slovak, Slovenian, Somali, Southern Sotho, South Ndebele, Spanish, Sundanese, Swahili, Swati, Swedish, Tagalog (Latin Script), Tahitian, Tatar

(Latin Script), Tongan, Tsonga, Tswana, Turkish, Turkmen (Latin Script), Twi, Uyghur (Latin Script), Uzbek (Latin Script), Venda, Volapuk, Walloon, Welsh, Western Frisian, Wolof, Xhosa, Zulu.







**7 Weights in BT1 Family:**

Thin, Light, Regular, DemiBold, Bold, Heavy, Extra-Condensed Heavy  
Thin Italic, Light Italic, Italic, DemiBold Italic, Bold Italic, Heavy Italic

**Design:** Jonas Hecksher, 2011  
**Published:** 2011  
**Version no.** 1.001/2011  
**Character set:** PRO

Playtype™ is an online type foundry and concept store, created as a place to play,  
a home for experimentation and a showcase of our craft.

100 Point

I am jolly and glad, h

72 Point

Meine Mutter zog mich aus c

60 Point

Var blevet hæftet fast til dén store

48 Point

L' Ambassadeur de France au Danemark, Vé

36 Point

España tiene una red de Consulados y Embajadas en el ex

30 Point

Nell'ambito culturale i rapporti bilaterali tra Italia e Danimarca sono ir

**7 Weights in BT1 Family:**

Thin, Light, Regular, DemiBold, Bold, Heavy, Extra-Condensed Heavy  
Thin Italic, Light Italic, Italic, DemiBold Italic, Bold Italic, Heavy Italic

**Design:** Jonas Hecksher, 2011  
**Published:** 2011  
**Version no.:** 1.001/2011  
**Character set:** PRO

Playtype™ is an online type foundry and concept store, created as a place to play,  
a home for experimentation and a showcase of our craft.

100 Point

I am jolly and glad, r

72 Point

Meine Mutter zog mich aus

60 Point

Var blevet hæftet fast til dén store

48 Point

L' Ambassadeur de France au Danemark, V

36 Point

España tiene una red de Consulados y Embajadas en el e

30 Point

Nell'ambito culturale i rapporti bilaterali tra Italia e Danimarca sono

**7 Weights in BT1 Family:**

Thin, Light, Regular, DemiBold, Bold, Heavy, Extra-Condensed Heavy  
Thin Italic, Light Italic, Italic, DemiBold Italic, Bold Italic, Heavy Italic

**Design:** Jonas Hecksher, 2011  
**Published:** 2011  
**Version no.** 1.001/2011  
**Character set:** PRO

Playtype™ is an online type foundry and concept store, created as a place to play,  
a home for experimentation and a showcase of our craft.

100 Point

I am jolly and glad, I

72 Point

Meine Mutter zog mich aus

60 Point

Var blevet hæftet fast til dén stor

48 Point

L' Ambassadeur de France au Danemark,

36 Point

España tiene una red de Consulados y Embajadas en e

30 Point

Nell'ambito culturale i rapporti bilaterali tra Italia e Danimarca son

**7 Weights in BT1 Family:**

Thin, Light, Regular, DemiBold, Bold, Heavy, Extra-Condensed Heavy  
Thin Italic, Light Italic, Italic, DemiBold Italic, Bold Italic, Heavy Italic

**Design:** Jonas Hecksher, 2011  
**Published:** 2011  
**Version no.** 1.001/2011  
**Character set:** PRO

Playtype™ is an online type foundry and concept store, created as a place to play,  
a home for experimentation and a showcase of our craft.

100 Point

I am jolly and glad,

72 Point

Meine Mutter zog mich au

60 Point

Var blevet hæftet fast til dén st

48 Point

L' Ambassadeur de France au Danemark

36 Point

España tiene una red de Consulados y Embajadas er

30 Point

Nell'ambito culturale i rapporti bilaterali tra Italia e Danimarca



**7 Weights in BT1 Family:**

Thin, Light, Regular, DemiBold, Bold, Heavy, Extra-Condensed Heavy  
Thin Italic, Light Italic, Italic, DemiBold Italic, Bold Italic, Heavy Italic

**Design:** Jonas Hecksher, 2011  
**Published:** 2011  
**Version no.** 1.001/2011  
**Character set:** PRO

Playtype™ is an online type foundry and concept store, created as a place to play,  
a home for experimentation and a showcase of our craft.

100 Point

I am jolly and glac

72 Point

Meine Mutter zog mich a

60 Point

Var blevet hæftet fast til dén s

48 Point

L' Ambassadeur de France au Danema

36 Point

España tiene una red de Consulados y Embajadas

30 Point

Nell'ambito culturale i rapporti bilaterali tra Italia e Danima

**7 Weights in BT1 Family:**

Thin, Light, Regular, DemiBold, Bold, Heavy, Extra-Condensed Heavy  
Thin Italic, Light Italic, Italic, DemiBold Italic, Bold Italic, Heavy Italic

**Design:** Jonas Hecksher, 2011  
**Published:** 2011  
**Version no.** 1.001/2011  
**Character set:** PRO

Playtype™ is an online type foundry and concept store, created as a place to play,  
a home for experimentation and a showcase of our craft.

100 Point

**I am jolly and glad**

72 Point

**Meine Mutter zog mich an**

60 Point

**Var blevet hæftet fast til dén**

48 Point

**L' Ambassadeur de France au Danemark**

36 Point

**España tiene una red de Consulados y Embajadas**

30 Point

**Nell'ambito culturale i rapporti bilaterali tra Italia e Danimarca**

**7 Weights in BT1 Family:**

Thin, Light, Regular, DemiBold, Bold, Heavy, Extra-Condensed Heavy  
Thin Italic, Light Italic, Italic, DemiBold Italic, Bold Italic, Heavy Italic

**Design:** Jonas Hecksher, 2011  
**Published:** 2011  
**Version no.** 1.001/2011  
**Character set:** PRO

Playtype™ is an online type foundry and concept store, created as a place to play,  
a home for experimentation and a showcase of our craft.

100 Point

*I am jolly and glad, h*

72 Point

*Meine Mutter zog mich aus a*

60 Point

*Var blevet hæftet fast til dén store*

48 Point

*L' Ambassadeur de France au Danemark, Vé*

36 Point

*España tiene una red de Consulados y Embajadas en el ex*

30 Point

*Nell'ambito culturale i rapporti bilaterali tra Italia e Danimarca sono im*

**7 Weights in BT1 Family:**

Thin, Light, Regular, DemiBold, Bold, Heavy, Extra-Condensed Heavy  
Thin Italic, Light Italic, Italic, DemiBold Italic, Bold Italic, Heavy Italic

**Design:** Jonas Hecksher, 2011  
**Published:** 2011  
**Version no.:** 1.001/2011  
**Character set:** PRO

Playtype™ is an online type foundry and concept store, created as a place to play,  
a home for experimentation and a showcase of our craft.

100 Point

*I am jolly and glad, h*

72 Point

*Meine Mutter zog mich aus d*

60 Point

*Var blevet hæftet fast til dén store*

48 Point

*L' Ambassadeur de France au Danemark, V*

36 Point

*España tiene una red de Consulados y Embajadas en el e*

30 Point

*Nell'ambito culturale i rapporti bilaterali tra Italia e Danimarca sono i*

**7 Weights in BT1 Family:**

Thin, Light, Regular, DemiBold, Bold, Heavy, Extra-Condensed Heavy  
Thin Italic, Light Italic, Italic, DemiBold Italic, Bold Italic, Heavy Italic

**Design:** Jonas Hecksher, 2011  
**Published:** 2011  
**Version no.:** 1.001/2011  
**Character set:** PRO

Playtype™ is an online type foundry and concept store, created as a place to play,  
a home for experimentation and a showcase of our craft.

100 Point

*I am jolly and glad, I*

72 Point

*Meine Mutter zog mich aus*

60 Point

*Var blevet hæftet fast til dén stor*

48 Point

*L' Ambassadeur de France au Danemark, l*

36 Point

*España tiene una red de Consulados y Embajadas en el*

30 Point

*Nell'ambito culturale i rapporti bilaterali tra Italia e Danimarca sono*

**7 Weights in BT1 Family:**

Thin, Light, Regular, DemiBold, Bold, Heavy, Extra-Condensed Heavy  
Thin Italic, Light Italic, Italic, DemiBold Italic, Bold Italic, Heavy Italic

**Design:** Jonas Hecksher, 2011  
**Published:** 2011  
**Version no.** 1.001/2011  
**Character set:** PRO

Playtype™ is an online type foundry and concept store, created as a place to play,  
a home for experimentation and a showcase of our craft.

100 Point

*I am jolly and glad,*

72 Point

*Meine Mutter zog mich aus*

60 Point

*Var blevet hæftet fast til dén stc*

48 Point

*L' Ambassadeur de France au Danemark*

36 Point

*España tiene una red de Consulados y Embajadas en*

30 Point

*Nell'ambito culturale i rapporti bilaterali tra Italia e Danimarca s*

**7 Weights in BT1 Family:**

Thin, Light, Regular, DemiBold, Bold, Heavy, Extra-Condensed Heavy  
Thin Italic, Light Italic, Italic, DemiBold Italic, Bold Italic, Heavy Italic

**Design:** Jonas Hecksher, 2011  
**Published:** 2011  
**Version no.** 1.001/2011  
**Character set:** PRO

Playtype™ is an online type foundry and concept store, created as a place to play,  
a home for experimentation and a showcase of our craft.

100 Point

*I am jolly and glad*

72 Point

*Meine Mutter zog mich au*

60 Point

*Var blevet hæftet fast til dén s*

48 Point

*L' Ambassadeur de France au Danema*

36 Point

*España tiene una red de Consulados y Embajadas*

30 Point

*Nell'ambito culturale i rapporti bilaterali tra Italia e Danimarca*

**7 Weights in BT1 Family:**

Thin, Light, Regular, DemiBold, Bold, Heavy, Extra-Condensed Heavy  
Thin Italic, Light Italic, Italic, DemiBold Italic, Bold Italic, Heavy Italic

**Design:** Jonas Hecksher, 2011  
**Published:** 2011  
**Version no.** 1.001/2011  
**Character set:** PRO

Playtype™ is an online type foundry and concept store, created as a place to play,  
a home for experimentation and a showcase of our craft.

100 Point

***I am jolly and glad***

72 Point

***Meine Mutter zog mich a***

60 Point

***Var blevet hæftet fast til dén***

48 Point

***L' Ambassadeur de France au Danem***

36 Point

***España tiene una red de Consulados y Embajadas***

30 Point

***Nell'ambito culturale i rapporti bilaterali tra Italia e Danima***



**7 Weights in BT1 Family:**

Thin, Light, Regular, DemiBold, Bold, Heavy, Extra-Condensed Heavy  
Thin Italic, Light Italic, Italic, DemiBold Italic, Bold Italic, Heavy Italic

**Design:** Jonas Hecksher, 2011  
**Published:** 2011  
**Version no.** 1.001/2011  
**Character set:** PRO

Playtype™ is an online type foundry and concept store, created as a place to play,  
a home for experimentation and a showcase of our craft.

100 Point

**I am jolly and glad, hap**

72 Point

**Meine Mutter zog mich aus den il**

60 Point

**Var blevet hæftet fast til dén store idé...**

48 Point

**L’Ambassadeur de France au Danemark, Véroniqu**

36 Point

**España tiene una red de Consulados y Embajadas en el exterior que**

30 Point

**Nell’ambito culturale i rapporti bilaterali tra Italia e Danimarca sono impronta**

**7 Weights in BT1 Family:**

Thin, Light, Regular, DemiBold, Bold, Heavy, Extra-Condensed Heavy  
 Thin Italic, Light Italic, Italic, DemiBold Italic, Bold Italic, Heavy Italic

**Design:** Jonas Hecksher, 2011  
**Published:** 2011  
**Version no.** 1.001/2011  
**Character set:** PRO

**Playtype™** is an online type foundry and concept store, created as a place to play, a home for experimentation and a showcase of our craft.

16/18 Point

YORKSHIRE&NORTH: Brimham Rocks. „387 acres“ of open moorland with an area of fantastically shaped rock formations? Special geological<sup>o</sup> interest! Leaflet, 65p (s.a.e.), from the address below. §Information Centre, shop and excellent «refreshment» kiosk open 11–5 on following dates: 3 to 8 April: Sat and Sun; 9 to 18 April: daily; 19 April to 28 May: Sat, Sun; 23 to 31 Oct: daily. Parking zone: cars £1.20, minibuses €2, motorcycles 50p, coaches £5. WC. NT Warden: Mr. P. Meese, Brimham© House, Summerbridge, Harrogate HJ3 4QZ; tel. Harrogate (0423) 780688. All† weather paths, suitable for wheelchair users<sup>a</sup>. Location: Archway, approached from Pateley/ Bridge road {B6265}, 10½ miles Æereo of Harrogate, approached from B6165 [99: SE2165]. mediæval manoeuvre große refined rifling refined rifling coffin afflict effect. The ‚New Zealand‘ dollar slumped from 59.2 US cents to ¥57.89, and the‡ b@dal-

200 Point

A a g z

12/14 Point

More days in daze. More scripts, more novels. More pages and clammy business cards passed of in moist handshakes. More Melissa. More pointless shopping sprees and more people to please. More dusty blond boys and speedos.

10/12 Point

I keep on cracking jokes, right? Because I'm funny. I want to be funny. Only each time the punch-line falls flat. My delivery is off. I keep glancing between the menu and the fois gras printed out in rounded serifs and the waiter laughing politely, anxiously. I settle on the duck since it strikes me as funny somehow. She picks her teeth and nods.

8/10 Point

The 'clack' of the cab door snaps me back and I nervously glance up at the departures sign. Numerals slither rapidly as I scan the board. SK402 to Copenhagen. Exhausted i push through security – belt, shoes, watch, laptop and slump down at the nearest bar. I slip out my credit card, leaving it on the bar and pick at the polaroid with Melissa's number on the back. 8 digits, XXX and Melissa with a heart dotting the i.

6/8 Point

The tattoo guns passes around the table. A kid etches out 'MOMS' in blue biro ink laughing hysterically as the machine purrs across his forearm. I can see Melissa through the open door to the bathroom, perched on the toilet, a pair of boys briefs around her ankles, absentmindedly smoking a cigarette and blowing smoke rings: O followed by Q followed by O.

4/6 Point

So voluntary that you'll need one to work, drive a car, travel abroad, use the banking or health system, vote, buy a house, or receive benefits.

## BT1 Light

### 7 Weights in BT1 Family:

Thin, Light, Regular, DemiBold, Bold, Heavy, Extra-Condensed Heavy  
 Thin Italic, Light Italic, Italic, DemiBold Italic, Bold Italic, Heavy Italic

**Design:** Jonas Hecksher, 2011  
**Published:** 2011  
**Version no.** 1.001/2011  
**Character set:** PRO

**Playtype™** is an online type foundry and concept store, created as a place to play, a home for experimentation and a showcase of our craft.

16/18 Point

YORKSHIRE&NORTH: Brimham Rocks. „387 acres“ of open moorland with an area of fantastically shaped rock formations? Special geological<sup>o</sup> interest! Leaflet, 65p (s.a.e.), from the address below. §Information Centre, shop and excellent «refreshment» kiosk open 11–5 on following dates: 3 to 8 April: Sat and Sun; 9 to 18 April: daily; 19 April to 28 May: Sat, Sun; 23 to 31 Oct: daily. Parking zone: cars £1.20, mini-buses €2, motorcycles 50p, coaches £5. WC. NT Warden: Mr. P. Meese, Brimham© House, Summerbridge, Harrogate HJ3 4QZ; tel. Harrogate (0423) 780688. All† weather paths, suitable for wheelchair users<sup>a</sup>. Location: Archway, approached from Pateley/Bridge road {B6265}, 10½ miles Aereo of Harrogate, approached from B6165 [99: SE2165]. mediæval manoeuvre große refined rifling refined rifling coffin afflict effect. The ‚New Zealand‘ dollar slumped from 59.2 US cents to ¥57.89,

200 Point

A a g z

12/14 Point

More days in daze. More scripts, more novels. More pages and clammy business cards passed of in moist handshakes. More Melissa. More pointless shopping sprees and more people to please. More dusty blond boys and speedos.

10/12 Point

I keep on cracking jokes, right? Because I'm funny. I want to be funny. Only each time the punch-line falls flat. My delivery is off. I keep glancing between the menu and the fois gras printed out in rounded serifs and the waiter laughing politely, anxiously. I settle on the duck since it strikes me as funny somehow. She picks her teeth and nods.

8/10 Point

The 'clack' of the cab door snaps me back and I nervously glance up at the departures sign. Numerals slither rapidly as I scan the board. SK402 to Copenhagen. Exhausted I push through security – belt, shoes, watch, laptop and slump down at the nearest bar. I slip out my credit card, leaving it on the bar and pick at the polaroid with Melissa's number on the back. 8 digits, XXX and Melissa with a heart dotting the i.

6/8 Point

The tattoo guns passes around the table- A kid etches out 'MOMS' in blue biro ink laughing hysterically as the machine purrs across his forearm. I can see Melissa through the open door to the bathroom, perched on the toilet, a pair of boys briefs around her ankles, absentmindedly smoking a cigarette and blowing smoke rings; O followed by Q followed by O.

4/6 Point

So voluntary that you'll need one to work, drive a car, travel abroad, use the banking or health system, vote, buy a house, or receive benefits.

## BT1 Regular

## 7 Weights in BT1 Family:

Thin, Light, Regular, DemiBold, Bold, Heavy, Extra-Condensed Heavy  
 Thin Italic, Light Italic, Italic, DemiBold Italic, Bold Italic, Heavy Italic

**Design:** Jonas Hecksher, 2011  
**Published:** 2011  
**Version no.** 1.001/2011  
**Character set:** PRO

Playtype™ is an online type foundry and concept store, created as a place to play, a home for experimentation and a showcase of our craft.

16/18 Point

YORKSHIRE&NORTH: Brimham Rocks. „387 acres“ of open moorland with an area of fantastically shaped rock formations? Special geological<sup>o</sup> interest! Leaflet, 65p (s.a.e.), from the address below. \$Information Centre, shop and excellent «refreshment» kiosk open 11–5 on following dates: 3 to 8 April: Sat and Sun; 9 to 18 April: daily; 19 April to 28 May: Sat, Sun; 23 to 31 Oct: daily. Parking zone: cars £1.20, minibuses €2, motorcycles 50p, coaches £5. WC. NT Warden: Mr. P. Meese, Brimham© House, Summerbridge, Harrogate HJ3 4QZ; tel. Harrogate (0423) 780688. All† weather paths, suitable for wheelchair users<sup>a</sup>. Location: Archway, approached from Pateley/Bridge road {B6265}, 10½ miles Æereo of Harrogate, approached from B6165 [99: SE2165]. mediæval manoeuvre große refined rifling refined rifling coffin afflict effect. The ‚New Zealand‘ dollar slumped from

200 Point

A a g z

12/14 Point

More days in daze. More scripts, more novels. More pages and clammy business cards passed of in moist handshakes. More Melissa. More pointless shopping sprees and more people to please. More dusty blond boys and speedos.

10/12 Point

I keep on cracking jokes, right? Because I'm funny. I want to be funny. Only each time the punch-line falls flat. My delivery is off. I keep glancing between the menu and the fois gras printed out in rounded serifs and the waiter laughing politely, anxiously. I settle on the duck since it strikes me as funny somehow. She picks her teeth and nods.

8/10 Point

The 'clack' of the cab door snaps me back and I nervously glance up at the departures sign. Numerals slither rapidly as I scan the board. SK402 to Copenhagen. Exhausted i push through security – belt, shoes, watch, laptop and slump down at the nearest bar. I slip out my credit card, leaving it on the bar and pick at the polaroid with Melissa's number on the back. 8 digits, XXX and Melissa with a heart dotting the i.

6/8 Point

The tattoo guns passes around the table. A kid etches out 'MOMS' in blue biro ink laughing hysterically as the machine purrs across his forearm. I can see Melissa through the open door to the bathroom, perched on the toilet, a pair of boys briefs around her ankles, absentmindedly smoking a cigarette and blowing smoke rings; Q followed by Q followed by Q.

4/6 Point

So voluntary that you'll need one to work, drive a car, travel abroad, use the banking or health system, vote, buy a house, or receive benefits.

**7 Weights in BT1 Family:**

Thin, Light, Regular, DemiBold, Bold, Heavy, Extra-Condensed Heavy  
 Thin Italic, Light Italic, Italic, DemiBold Italic, Bold Italic, Heavy Italic

**Design:** Jonas Hecksher, 2011  
**Published:** 2011  
**Version no.** 1.001/2011  
**Character set:** PRO

16/18 Point

**YORKSHIRE&NORTH: Brimham Rocks. „387 acres“ of open moorland with an area of fantastically shaped rock formations? Special geological<sup>o</sup> interest! Leaflet, 65p (s.a.e.), from the address below. §Information Centre, shop and excellent «refreshment» kiosk open 11–5 on following dates: 3 to 8 April: Sat and Sun; 9 to 18 April: daily; 19 April to 28 May: Sat, Sun; 23 to 31 Oct: daily. Parking zone: cars £1.20, minibuses €2, motorcycles 50p, coaches £5. WC. NT Warden: Mr. P. Meese, Brimham© House, Summerbridge, Harrogate HJ3 4QZ; tel. Harrogate (0423) 780688. All† weather paths, suitable for wheelchair users<sup>a</sup>. Location: Archway, approached from Pateley/Bridge road {B6265}, 10½ miles Æereo of Harrogate, approached from B6165 [99: SE2165]. mediæval manoeuvre große refined rifling refined rifling coffin af-**

200 Point

**A a g g 2**

**Playtype™** is an online type foundry and concept store, created as a place to play, a home for experimentation and a showcase of our craft.

12/14 Point

**More days in daze. More scripts, more novels. More pages and clammy business cards passed of in moist handshakes. More Melissa. More pointless shopping sprees and more people to please. More dusty blond boys and speedos.**

10/12 Point

**I keep on cracking jokes, right? Because I'm funny. I want to be funny. Only each time the punch-line falls flat. My delivery is off. I keep glancing between the menu and the fois gras printed out in rounded serifs and the waiter laughing politely, anxiously. I settle on the duck since it strikes me as funny somehow. She picks her teeth and nods.**

8/10 Point

**The 'clack' of the cab door snaps me back and I nervously glance up at the departures sign. Numerals slither rapidly as I scan the board. SK402 to Copenhagen. Exhausted I push through security – belt, shoes, watch, laptop and slump down at the nearest bar. I slip out my credit card, leaving it on the bar and pick at the polaroid with Melissa's number on the back. 8 digits, XXX and Melissa with a heart dotting the i.**

6/8 Point

**The tattoo guns passes around the table- A kid etches out 'MOMS' in blue biro ink laughing hysterically as the machine purrs across his forearm. I can see Melissa through the open door to the bathroom, perched on the toilet, a pair of boys briefs around her ankles, absentmindedly smoking a cigarette and blowing smoke rings; 0 followed by Q followed by 0.**

4/6 Point

**So voluntary that you'll need one to work, drive a car, travel abroad, use the banking or health system, vote, buy a house, or receive benefits.**

## BT1 Bold

### 7 Weights in BT1 Family:

Thin, Light, Regular, DemiBold, Bold, Heavy, Extra-Condensed Heavy  
 Thin Italic, Light Italic, Italic, DemiBold Italic, Bold Italic, Heavy Italic

**Design:** Jonas Hecksher, 2011  
**Published:** 2011  
**Version no.** 1.001/2011  
**Character set:** PRO

Playtype™ is an online type foundry and concept store, created as a place to play, a home for experimentation and a showcase of our craft.

16/18 Point

**YORKSHIRE&NORTH: Brimham Rocks. „387 acres“ of open moorland with an area of fantastically shaped rock formations? Special geological<sup>o</sup> interest! Leaflet, 65p (s.a.e.), from the address below. §Information Centre, shop and excellent «refreshment» kiosk open 11–5 on following dates: 3 to 8 April: Sat and Sun; 9 to 18 April: daily; 19 April to 28 May: Sat, Sun; 23 to 31 Oct: daily. Parking zone: cars £1.20, minibuses €2, motorcycles 50p, coaches £5. WC. NT Warden: Mr. P. Meese, Brimham© House, Summerbridge, Harrogate HJ3 4QZ; tel. Harrogate (0423) 780688. All† weather paths, suitable for wheelchair users<sup>a</sup>. Location: Archway, approached from Pateley/Bridge road {B6265}, 10½ miles Æereo of Harrogate, approached from B6165 [99: SE2165]. mediæval manoeuvre große**

200 Point

**A a g z**

12/14 Point

**More days in daze. More scripts, more novels. More pages and clammy business cards passed of in moist handshakes. More Melissa. More pointless shopping sprees and more people to please. More dusty blond boys and speedos.**

10/12 Point

**I keep on cracking jokes, right? Because I'm funny. I want to be funny. Only each time the punch-line falls flat. My delivery is off. I keep glancing between the menu and the fois gras printed out in rounded serifs and the waiter laughing politely, anxiously. I settle on the duck since it strikes me as funny somehow. She picks her teeth and nods.**

8/10 Point

**The 'clack' of the cab door snaps me back and I nervously glance up at the departures sign. Numerals slither rapidly as I scan the board. SK402 to Copenhagen. Exhausted I push through security – belt, shoes, watch, laptop and slump down at the nearest bar. I slip out my credit card, leaving it on the bar and pick at the polaroid with Melissa's number on the back. 8 digits, XXX and Melissa with a heart dotting the i.**

6/8 Point

**The tattoo guns passes around the table- A kid etches out 'MOMS' in blue biro ink laughing hysterically as the machine purrs across his forearm. I can see Melissa through the open door to the bathroom, perched on the toilet, a pair of boys briefs around her ankles, absentmindedly smoking a cigarette and blowing smoke rings; 0 followed by Q followed by 0.**

4/6 Point

**So voluntary that you'll need one to work, drive a car, travel abroad, use the banking or health system, vote, buy a house, or receive benefits.**

## BT1 Heavy

### 7 Weights in BT1 Family:

Thin, Light, Regular, DemiBold, Bold, Heavy, Extra-Condensed Heavy  
 Thin Italic, Light Italic, Italic, DemiBold Italic, Bold Italic, Heavy Italic

**Design:** Jonas Hecksher, 2011  
**Published:** 2011  
**Version no.** 1.001/2011  
**Character set:** PRO

Playtype™ is an online type foundry and concept store, created as a place to play, a home for experimentation and a showcase of our craft.

16/18 Point

**YORKSHIRE&NORTH: Brimham Rocks. „387 acres“ of open moorland with an area of fantastically shaped rock formations? Special geological<sup>o</sup> interest! Leaflet, 65p (s.a.e.), from the address below. \$Information Centre, shop and excellent «refreshment» kiosk open 11–5 on following dates: 3 to 8 April: Sat and Sun; 9 to 18 April: daily; 19 April to 28 May: Sat, Sun; 23 to 31 Oct: daily. Parking zone: cars £1.20, minibuses €2, motorcycles 50p, coaches £5. WC. NT Warden: Mr. P. Meese, Brimham© House, Summerbridge, Harrogate HJ3 4QZ; tel. Harrogate (0423) 780688. All† weather paths, suitable for wheelchair users<sup>a</sup>. Location: Archway, approached from Pateley/Bridge road {B6265}, 10½ miles Aereo of Harrogate, approached from B6165**

200 Point

**A a g z**

12/14 Point

**More days in daze. More scripts, more novels. More pages and clammy business cards passed of in moist handshakes. More Melissa. More pointless shopping sprees and more people to please. More dusty blond boys and speedos.**

10/12 Point

**I keep on cracking jokes, right? Because I'm funny. I want to be funny. Only each time the punch-line falls flat. My delivery is off. I keep glancing between the menu and the fois gras printed out in rounded serifs and the waiter laughing politely, anxiously. I settle on the duck since it strikes me as funny somehow. She picks her teeth and nods.**

8/10 Point

**The 'clack' of the cab door snaps me back and I nervously glance up at the departures sign. Numerals slither rapidly as I scan the board. SK402 to Copenhagen. Exhausted I push through security – belt, shoes, watch, laptop and slump down at the nearest bar. I slip out my credit card, leaving it on the bar and pick at the polaroid with Melissa's number on the back. 8 digits, XXX and Melissa with a heart dotting the i.**

6/8 Point

**The tattoo guns passes around the table- A kid etches out 'MOMS' in blue biro ink laughing hysterically as the machine purrs across his forearm. I can see Melissa through the open door to the bathroom, perched on the toilet, a pair of boys briefs around her ankles, absentmindedly smoking a cigarette and blowing smoke rings; O followed by Q followed by O.**

4/6 Point

**So voluntary that you'll need one to work, drive a car, travel abroad, use the banking or health system, vote, buy a house, or receive benefits.**

## BT1 Thin Italic

### 7 Weights in BT1 Family:

Thin, Light, Regular, DemiBold, Bold, Heavy, Extra-Condensed Heavy  
 Thin Italic, Light Italic, Italic, DemiBold Italic, Bold Italic, Heavy Italic

**Design:** Jonas Hecksher, 2011  
**Published:** 2011  
**Version no.** 1.001/2011  
**Character set:** PRO

16/18 Point

*YORKSHIRE&NORTH: Brimham Rocks. „387 acres“ of open moorland with an area of fantastically shaped rock formations? Special geological<sup>o</sup> interest! Leaflet, 65p (s.a.e.), from the address below. §Information Centre, shop and excellent «refreshment» kiosk open 11–5 on following dates: 3 to 8 April: Sat and Sun; 9 to 18 April: daily; 19 April to 28 May: Sat, Sun; 23 to 31 Oct: daily. Parking zone: cars £1.20, minibuses €2, motorcycles 50p, coaches £5. WC. NT Warden: Mr. P. Meese, Brimham© House, Summerbridge, Harrogate HJ3 4QZ; tel. Harrogate (0423) 780688. All† weather paths, suitable for wheelchair users<sup>a</sup>. Location: Archway, approached from Pateley/Bridge road {B6265}, 10½ miles Aereo of Harrogate, approached from B6165 [99: SE2165]. mediæval manoeuvre große refined rifling refined rifling coffin afflict effect. The ‚New Zealand‘ dollar slumped from 59.2 US cents to ¥57.89, and the‡ b@dal-*

200 Point

*A a g g 2*

**Playtype™** is an online type foundry and concept store, created as a place to play, a home for experimentation and a showcase of our craft.

12/14 Point

*More days in daze. More scripts, more novels. More pages and clammy business cards passed of in moist handshakes. More Melissa. More pointless shopping sprees and more people to please. More dusty blond boys and speedos.*

10/12 Point

*I keep on cracking jokes, right? Because I'm funny. I want to be funny. Only each time the punch-line falls flat. My delivery is off. I keep glancing between the menu and the fois gras printed out in rounded serifs and the waiter laughing politely, anxiously. I settle on the duck since it strikes me as funny somehow. She picks her teeth and nods.*

8/10 Point

*The 'clack' of the cab door snaps me back and I nervously glance up at the departures sign. Numerals slither rapidly as I scan the board. SK402 to Copenhagen. Exhausted i push through security – belt, shoes, watch, laptop and slump down at the nearest bar. I slip out my credit card, leaving it on the bar and pick at the polaroid with Melissa's number on the back. 8 digits, XXX and Melissa with a heart dotting the i.*

6/8 Point

*The tattoo guns passes around the table- A kid etches out 'MOMS' in blue biro ink laughing hysterically as the machine purrs across his forearm. I can see Melissa through the open door to the bathroom, perched on the toilet, a pair of boys briefs around her ankles, absentmindedly smoking a cigarette and blowing smoke rings; 0 followed by Q followed by 0.*

4/6 Point

*So voluntary that you'll need one to work, drive a car, travel abroad, use the banking or health system, vote, buy a house, or receive benefits.*



## BT1 Light Italic

### 7 Weights in BT1 Family:

Thin, Light, Regular, DemiBold, Bold, Heavy, Extra-Condensed Heavy  
 Thin Italic, Light Italic, Italic, DemiBold Italic, Bold Italic, Heavy Italic

**Design:** Jonas Hecksher, 2011  
**Published:** 2011  
**Version no.** 1.001/2011  
**Character set:** PRO

16/18 Point

*YORKSHIRE&NORTH: Brimham Rocks. „387 acres“ of open moorland with an area of fantastically shaped rock formations? Special geological<sup>o</sup> interest! Leaflet, 65p (s.a.e.), from the address below. \$Information Centre, shop and excellent «refreshment» kiosk open 11–5 on following dates: 3 to 8 April: Sat and Sun; 9 to 18 April: daily; 19 April to 28 May: Sat, Sun; 23 to 31 Oct: daily. Parking zone: cars £1.20, mini-buses €2, motorcycles 50p, coaches £5. WC. NT Warden: Mr. P. Meese, Brimham© House, Summerbridge, Harrogate HJ3 4QZ; tel. Harrogate (0423) 780688. All† weather paths, suitable for wheelchair users<sup>a</sup>. Location: Archway, approached from Pateley/Bridge road {B6265}, 10½ miles Aereo of Harrogate, approached from B6165 [99: SE2165]. mediæval manoeuvre große refined rifling refined rifling coffin afflict effect. The ‚New Zealand‘ dollar slumped from 59.2 US cents to ¥57.89,*

200 Point

*A a g 2*

**Playtype™** is an online type foundry and concept store, created as a place to play, a home for experimentation and a showcase of our craft.

12/14 Point

*More days in daze. More scripts, more novels. More pages and clammy business cards passed of in moist handshakes. More Melissa. More pointless shopping sprees and more people to please. More dusty blond boys and speedos.*

10/12 Point

*I keep on cracking jokes, right? Because I'm funny. I want to be funny. Only each time the punch-line falls flat. My delivery is off. I keep glancing between the menu and the fois gras printed out in rounded serifs and the waiter laughing politely, anxiously. I settle on the duck since it strikes me as funny somehow. She picks her teeth and nods.*

8/10 Point

*The 'clack' of the cab door snaps me back and I nervously glance up at the departures sign. Numerals slither rapidly as I scan the board. SK402 to Copenhagen. Exhausted I push through security – belt, shoes, watch, laptop and slump down at the nearest bar. I slip out my credit card, leaving it on the bar and pick at the polaroid with Melissa's number on the back. 8 digits, XXX and Melissa with a heart dotting the i.*

6/8 Point

*The tattoo guns passes around the table- A kid etches out 'MOMS' in blue biro ink laughing hysterically as the machine purrs across his forearm. I can see Melissa through the open door to the bathroom, perched on the toilet, a pair of boys briefs around her ankles, absentmindedly smoking a cigarette and blowing smoke rings; O followed by Q followed by O.*

4/6 Point

*So voluntary that you'll need one to work, drive a car, travel abroad, use the banking or health system, vote, buy a house, or receive benefits.*

## 7 Weights in BT1 Family:

Thin, Light, Regular, DemiBold, Bold, Heavy, Extra-Condensed Heavy  
 Thin Italic, Light Italic, Italic, DemiBold Italic, Bold Italic, Heavy Italic

**Design:** Jonas Hecksher, 2011  
**Published:** 2011  
**Version no.** 1.001/2011  
**Character set:** PRO

16/18 Point

*YORKSHIRE&NORTH: Brimham Rocks. „387 acres“ of open moorland with an area of fantastically shaped rock formations? Special geological<sup>o</sup> interest! Leaflet, 65p (s.a.e.), from the address below. §Information Centre, shop and excellent «refreshment» kiosk open 11–5 on following dates: 3 to 8 April: Sat and Sun; 9 to 18 April: daily; 19 April to 28 May: Sat, Sun; 23 to 31 Oct: daily. Parking zone: cars £1.20, minibuses €2, motorcycles 50p, coaches £5. WC. NT Warden: Mr. P. Meese, Brimham© House, Summerbridge, Harrogate HJ3 4QZ; tel. Harrogate (0423) 780688. All† weather paths, suitable for wheelchair users<sup>a</sup>. Location: Archway, approached from Pateley/Bridge road {B6265}, 10½ miles Æreo of Harrogate, approached from B6165 [99: SE2165]. mediæval manoeuvre große refined rifling refined rifling coffin afflict effect. The ‚New Zealand‘ dollar slumped from 59.2*

200 Point

*A a g g 2*

Playtype™ is an online type foundry and concept store, created as a place to play, a home for experimentation and a showcase of our craft.

12/14 Point

*More days in daze. More scripts, more novels. More pages and clammy business cards passed of in moist handshakes. More Melissa. More pointless shopping sprees and more people to please. More dusty blond boys and speedos.*

10/12 Point

*I keep on cracking jokes, right? Because I'm funny. I want to be funny. Only each time the punch-line falls flat. My delivery is off. I keep glancing between the menu and the fois gras printed out in rounded serifs and the waiter laughing politely, anxiously. I settle on the duck since it strikes me as funny somehow. She picks her teeth and nods.*

8/10 Point

*The 'clack' of the cab door snaps me back and I nervously glance up at the departures sign. Numerals slither rapidly as I scan the board. SK402 to Copenhagen. Exhausted i push through security – belt, shoes, watch, laptop and slump down at the nearest bar. I slip out my credit card, leaving it on the bar and pick at the polaroid with Melissa's number on the back. 8 digits, XXX and Melissa with a heart dotting the i.*

6/8 Point

*The tattoo guns passes around the table- A kid etches out 'MOMS' in blue biro ink laughing hysterically as the machine purrs across his forearm. I can see Melissa through the open door to the bathroom, perched on the toilet, a pair of boys briefs around her ankles, absentmindedly smoking a cigarette and blowing smoke rings; O followed by Q followed by O.*

4/6 Point

*So voluntary that you'll need one to work, drive a car, travel abroad, use the banking or health system, vote, buy a house, or receive benefits.*

## BT1 DemiBold Italic

### 7 Weights in BT1 Family:

Thin, Light, Regular, DemiBold, Bold, Heavy, Extra-Condensed Heavy  
 Thin Italic, Light Italic, Italic, DemiBold Italic, Bold Italic, Heavy Italic

**Design:** Jonas Hecksher, 2011  
**Published:** 2011  
**Version no.** 1.001/2011  
**Character set:** PRO

16/18 Point

***YORKSHIRE&NORTH: Brimham Rocks. „387 acres“ of open moorland with an area of fantastically shaped rock formations? Special geological<sup>o</sup> interest! Leaflet, 65p (s.a.e.), from the address below. \$Information Centre, shop and excellent «refreshment» kiosk open 11–5 on following dates: 3 to 8 April: Sat and Sun; 9 to 18 April: daily; 19 April to 28 May: Sat, Sun; 23 to 31 Oct: daily. Parking zone: cars £1.20, minibuses €2, motorcycles 50p, coaches £5. WC. NT Warden: Mr. P. Meese, Brimham© House, Summerbridge, Harrogate HJ3 4QZ; tel. Harrogate (0423) 780688. All† weather paths, suitable for wheel-chair users<sup>a</sup>. Location: Archway, approached from Pateley/Bridge road {B6265}, 10½ miles Æereo of Harrogate, approached from B6165 [99: SE2165]. mediæval manoeuvre große refined rifling refined rifling coffin afflict effect.***

200 Point

***A a g 2***

Playtype™ is an online type foundry and concept store, created as a place to play, a home for experimentation and a showcase of our craft.

12/14 Point

***More days in daze. More scripts, more novels. More pages and clammy business cards passed of in moist handshakes. More Melissa. More pointless shopping sprees and more people to please. More dusty blond boys and speedos.***

10/12 Point

***I keep on cracking jokes, right? Because I'm funny. I want to be funny. Only each time the punch-line falls flat. My delivery is off. I keep glancing between the menu and the fois gras printed out in rounded serifs and the waiter laughing politely, anxiously. I settle on the duck since it strikes me as funny somehow. She picks her teeth and nods.***

8/10 Point

***The 'clack' of the cab door snaps me back and I nervously glance up at the departures sign. Numerals slither rapidly as I scan the board. SK402 to Copenhagen. Exhausted I push through security – belt, shoes, watch, laptop and slump down at the nearest bar. I slip out my credit card, leaving it on the bar and pick at the polaroid with Melissa's number on the back. 8 digits, XXX and Melissa with a heart dotting the i.***

6/8 Point

***The tattoo guns passes around the table- A kid etches out 'MOMS' in blue biro ink laughing hysterically as the machine purrs across his forearm. I can see Melissa through the open door to the bathroom, perched on the toilet, a pair of boys briefs around her ankles, absentmindedly smoking a cigarette and blowing smoke rings; O followed by Q followed by O.***

4/6 Point

***So voluntary that you'll need one to work, drive a car, travel abroad, use the banking or health system, vote, buy a house, or receive benefits.***

## BT1 Bold Italic

### 7 Weights in BT1 Family:

Thin, Light, Regular, DemiBold, Bold, Heavy, Extra-Condensed Heavy  
 Thin Italic, Light Italic, Italic, DemiBold Italic, Bold Italic, Heavy Italic

**Design:** Jonas Hecksher, 2011  
**Published:** 2011  
**Version no.** 1.001/2011  
**Character set:** PRO

Playtype™ is an online type foundry and concept store, created as a place to play, a home for experimentation and a showcase of our craft.

16/18 Point

**YORKSHIRE&NORTH: Brimham Rocks. „387 acres“ of open moorland with an area of fantastically shaped rock formations? Special geological<sup>o</sup> interest! Leaflet, 65p (s.a.e.), from the address below. §Information Centre, shop and excellent «refreshment» kiosk open 11–5 on following dates: 3 to 8 April: Sat and Sun; 9 to 18 April: daily; 19 April to 28 May: Sat, Sun; 23 to 31 Oct: daily. Parking zone: cars £1.20, minibuses €2, motorcycles 50p, coaches £5. WC. NT Warden: Mr. P. Meese, Brimham© House, Summerbridge, Harrogate HJ3 4QZ; tel. Harrogate (0423) 780688. All† weather paths, suitable for wheelchair users<sup>a</sup>. Location: Archway, approached from Pateley/Bridge road {B6265}, 10½ miles Æereo of Harrogate, approached from B6165 [99: SE2165]. mediæval manoeuvre große**

200 Point

**A a g 2**

12/14 Point

**More days in daze. More scripts, more novels. More pages and clammy business cards passed of in moist handshakes. More Melissa. More pointless shopping sprees and more people to please. More dusty blond boys and speedos.**

10/12 Point

**I keep on cracking jokes, right? Because I'm funny. I want to be funny. Only each time the punch-line falls flat. My delivery is off. I keep glancing between the menu and the fois gras printed out in rounded serifs and the waiter laughing politely, anxiously. I settle on the duck since it strikes me as funny somehow. She picks her teeth and nods.**

8/10 Point

**The 'clack' of the cab door snaps me back and I nervously glance up at the departures sign. Numerals slither rapidly as I scan the board. SK402 to Copenhagen. Exhausted I push through security – belt, shoes, watch, laptop and slump down at the nearest bar. I slip out my credit card, leaving it on the bar and pick at the polaroid with Melissa's number on the back. 8 digits, XXX and Melissa with a heart dotting the i.**

6/8 Point

**The tattoo guns passes around the table- A kid etches out 'MOMS' in blue biro ink laughing hysterically as the machine purrs across his forearm. I can see Melissa through the open door to the bathroom, perched on the toilet, a pair of boys briefs around her ankles, absentmindedly smoking a cigarette and blowing smoke rings; O followed by Q followed by O.**

4/6 Point

**So voluntary that you'll need one to work, drive a car, travel abroad, use the banking or health system, vote, buy a house, or receive benefits.**

## BT1 Heavy Italic

### 7 Weights in BT1 Family:

Thin, Light, Regular, DemiBold, Bold, Heavy, Extra-Condensed Heavy  
 Thin Italic, Light Italic, Italic, DemiBold Italic, Bold Italic, Heavy Italic

**Design:** Jonas Hecksher, 2011  
**Published:** 2011  
**Version no.** 1.001/2011  
**Character set:** PRO

16/18 Point

**YORKSHIRE&NORTH: Brimham Rocks. „387 acres“ of open moor-land with an area of fantastically shaped rock formations? Special geological<sup>o</sup> interest! Leaflet, 65p (s.a.e.), from the address below. \$In-formation Centre, shop and excellent «refreshment» kiosk open 11–5 on following dates: 3 to 8 April: Sat and Sun; 9 to 18 April: daily; 19 April to 28 May: Sat, Sun; 23 to 31 Oct: daily. Parking zone: cars £1.20, minibuses €2, motorcycles 50p, coaches £5. WC. NT Warden: Mr. P. Meese, Brimham© House, Summerbridge, Harrogate HJ3 4QZ; tel. Harrogate (0423) 780688. All† weather paths, suitable for wheelchair users<sup>a</sup>. Location: Archway, approached from Pateley/Bridge road {B6265}, 10½ miles Æreo of Harrogate, approached from B6165 [99: SE2165]. mediæval**

200 Point

**A a g 2**

Playtype™ is an online type foundry and concept store, created as a place to play, a home for experimentation and a showcase of our craft.

12/14 Point

**More days in daze. More scripts, more novels. More pages and clammy business cards passed of in moist handshakes. More Melissa. More pointless shopping sprees and more people to please. More dusty blond boys and speedos.**

10/12 Point

**I keep on cracking jokes, right? Because I'm funny. I want to be funny. Only each time the punch-line falls flat. My delivery is off. I keep glancing between the menu and the fois gras printed out in rounded serifs and the waiter laughing politely, anxiously. I settle on the duck since it strikes me as funny somehow. She picks her teeth and nods.**

8/10 Point

**The 'clack' of the cab door snaps me back and I nervously glance up at the departures sign. Numerals slither rapidly as I scan the board. SK402 to Copenhagen. Exhausted I push through security – belt, shoes, watch, laptop and slump down at the nearest bar. I slip out my credit card, leaving it on the bar and pick at the polaroid with Melissa's number on the back. 8 digits, XXX and Melissa with a heart doting the i.**

6/8 Point

**The tattoo guns passes around the table- A kid etches out 'MOMS' in blue biro ink laughing hysterically as the machine purrs across his forearm. I can see Melissa through the open door to the bathroom, perched on the toilet, a pair of boys briefs around her ankles, absentmindedly smoking a cigarette and blowing smoke rings; O followed by Q followed by O.**

4/6 Point

**So voluntary that you'll need one to work, drive a car, travel abroad, use the banking or health system, vote, buy a house, or receive benefits.**

## BT1 Extra-Condensed Heavy

### 7 Weights in BT1 Family:

Thin, Light, Regular, DemiBold, Bold, Heavy, Extra-Condensed Heavy  
 Thin Italic, Light Italic, Italic, DemiBold Italic, Bold Italic, Heavy Italic

**Design:** Jonas Hecksher, 2011  
**Published:** 2011  
**Version no.** 1.001/2011  
**Character set:** PRO

Playtype™ is an online type foundry and concept store, created as a place to play, a home for experimentation and a showcase of our craft.

16/18 Point

**YORKSHIRE&NORTH: Brimham Rocks. „387 acres“ of open moorland with an area of fantastically shaped rock formations? Special geological<sup>o</sup> interest! Leaflet, 65p (s.a.e.), from the address below. \$Information Centre, shop and excellent «refreshment» kiosk open 11–5 on following dates: 3 to 8 April: Sat and Sun; 9 to 18 April: daily; 19 April to 28 May: Sat, Sun; 23 to 31 Oct: daily. Parking zone: cars £1.20, minibuses €2, motorcycles 50p, coaches £5. WC. NT Warden: Mr. P. Meese, Brimham© House, Summerbridge, Harrogate HJ3 4QZ; tel. Harrogate (0423) 780688. All† weather paths, suitable for wheelchair users<sup>a</sup>. Location: Archway, approached from Pateley/Bridge road {B6265}, 10<sup>1</sup>/<sub>2</sub> miles Æreo of Harrogate, approached from B6165 [99: SE2165]. mediæval manoeuvre große refined rifling refined rifling coffin afflict effect. The ,New Zealand‘ dollar slumped from 59.2 US cents to ¥57.89, and the‡ b@dalton Australian dollar from 65,65 American cents to f64.93. This in turn pushed the pound up to 1997 highs of NZ\$2.818, from**

200 Point

# Aaag1

12/14 Point

**More days in daze. More scripts, more novels. More pages and clammy business cards passed of in moist handshakes. More Melissa. More pointless shopping sprees and more people to please. More dusty blond boys and speedos.**

10/12 Point

**I keep on cracking jokes, right? Because I'm funny. I want to be funny. Only each time the punch-line falls flat. My delivery is off. I keep glancing between the menu and the fois gras printed out in rounded serifs and the waiter laughing politely, anxiously. I settle on the duck since it strikes me as funny somehow. She picks her teeth and nods.**

8/10 Point

**The ‘clack’ of the cab door snaps me back and I nervously glance up at the departures sign. Numerals slither rapidly as I scan the board. SK402 to Copenhagen. Exhausted i push through security – belt, shoes, watch, laptop and slump down at the nearest bar. I slip out my credit card, leaving it on the bar and pick at the polaroid with Melissa’s number on the back. 8 digits, XXX and Melissa with a heart dotting the I.**

6/8 Point

**The tattoo guns passes around the table- A kid etches out ‘MOMS’ in blue biro ink laughing hysterically as the machine purrs across his forearm. I can see Melissa through the open door to the bathroom, perched on the toilet, a pair of boys briefs around her ankles, absentmindedly smoking a cigarette and blowing smoke rings; O followed by Q followed by O.**

4/6 Point

**So voluntary that you'll need one to work, drive a car, travel abroad, use the banking or health system, vote, buy a house, or receive benefits.**

## BT1 Extra-Condensed Heavy (CYRILLIC)

### 7 Weights in BT1 Family:

Thin, Light, Regular, DemiBold, Bold, Heavy, Extra-Condensed Heavy  
 Thin Italic, Light Italic, Italic, DemiBold Italic, Bold Italic, Heavy Italic

**Design:** Jonas Hecksher, 2011  
**Published:** 2011  
**Version no.** 1.001/2011  
**Character set:** PRO

Playtype™ is an online type foundry and concept store, created as a place to play, a home for experimentation and a showcase of our craft.

16/18 Point — Cyrillic

**Москва — крупнейший деловой центр России и стран СНГ, один из наиболее динамично развивающихся мегаполисов мира. Москва — лидер России в деле развития предпринимательства, поддержки бизнеса, внедрения новых бизнес-технологий. Москва на сегодняшний день является центром современной кредитно-финансовой системы России. Как субъект РФ в глазах иностранных инвесторов она наиболее инвестиционно привлекательна из всех российских регионов. По данным за 2010 год, в столице зарегистрировано порядка 6537 компаний с иностранным участием с уставным капиталом свыше 1 трлн. рублей, в которых задействовано свыше 480 тыс. человек (без учета работающих по договорам и совместителей). Удельный вес Москвы в общем объеме инвестиций оценивается на уровне 40-45%, что свидетельствует о системообразующей роли столицы в сотрудничестве России с зарубежными инвесторами.**

200 Point — Cyrillic

# АаЖж2

12/14 Point — Cyrillic

**Так, только в 2009 году в экономику Москвы поступило \$ 40,3 млрд. иностранных инвестиций, что составило более 50% всех инвестиций в российскую экономику, из них объем прямых иностранных инвестиций (ПИИ) составил \$5,6 млрд.**

10/12 Point — Cyrillic

**Наиболее привлекательными для зарубежных инвесторов в сфере экономики Москвы являются ориентированные на потребительский спрос оптовая и розничная торговля, а также операции с недвижимостью и финансы. Предприятия и организации города осуществляют экспортно-импортные операции с более чем 190 странами мира. Основными торговыми партнерами Москвы являются Германия, Нидерланды, Италия, Китай, Япония.**

8/10 Point — Cyrillic

**Московское правительство считает своей главной задачей создание комфортных условий для работы бизнеса, поддержку частного предпринимательства. Для этого совершенствуется законодательство, разрабатываются программы привлечения инвесторов в различные сферы экономики, и, прежде всего, в инновационную сферу и наукоемкое производство. В Москве в посткризисный период активизировалась работа по развитию инфраструктуры поддержки бизнеса, связанная, в частности, с созданием многофунк-**

6/8 Point — Cyrillic

**В московской деловой среде бизнес-сообщество страны представляют ряд известных организаций — Московская ассоциация предпринимателей, которая ставит целью защиту прав и интересов своих членов, оказание консультативной помощи, поддержание диалога с органами государственной власти; Московская международная бизнес ассоциация, создающая максимально комфортные условия для деятельности российских и зарубежных предпринимателей в Москве; Некоммерческое партнерство «Объединение предпринимательских организаций России» (ОПОРА России), объединяющее предпринимателей для участия в формировании благоприятных политических, экономических, правовых и иных условий развития бизнеса в РФ; Московский клуб молодых предпринимателей, основной задачей**

4/6 Point

*So voluntary that you'll need one to work, drive a car, travel abroad, use the banking or health system, vote, buy a house, or receive benefits.*

## BT1 Extra-Condensed Heavy (GREEK)

### 7 Weights in BT1 Family:

Thin, Light, Regular, DemiBold, Bold, Heavy, Extra-Condensed Heavy  
 Thin Italic, Light Italic, Italic, DemiBold Italic, Bold Italic, Heavy Italic

**Design:** Jonas Hecksher, 2011  
**Published:** 2011  
**Version no.** 1.001/2011  
**Character set:** PRO

Playtype™ is an online type foundry and concept store, created as a place to play, a home for experimentation and a showcase of our craft.

16/18 Point — Greek

**Τα εργαστήρια ψηφιακού animation ξεκίνησαν το 2007 με τη συμμετοχή των Βρεφονηπιακών σταθμών του Δήμου, καθώς και των Δημοτικών σχολείων, των Γυμνασίων και Λυκείων των επτά διαμερισμάτων του Δήμου Αθηναίων. Εργαστήρια διεξάγονται επίσης, στις παιδικές κατασκηνώσεις του Δήμου Αθηναίων στον Αγ. Ανδρέα Αττικής, καθώς και σε εκδηλώσεις τρίτων φορέων μη κερδοσκοπικού χαρακτήρα. Υλοποιώντας τα εργαστήρια ψηφιακού animation ο Δήμος της Αθήνας έχει δύο στόχους: να ευαισθητοποιήσει τους μαθητές σε θέματα περιβάλλοντος και στο πως υποβαθμισμένα κομμάτια της ίδιας τους της γειτονιάς μπορούν να μετατραπούν σε πνεύμονες πρασίνου. να φέρει τους μαθητές πιο κοντά στη σύγχρονη τεχνολογία μέσα από την τέχνη του κινουμένου σχεδίου και του 3D animation.**

200 Point — Greek

**Ααζζ**

12/14 Point — Greek

**Να φέρει τους μαθητές πιο κοντά στη σύγχρονη τεχνολογία μέσα από την τέχνη του κινουμένου σχεδίου και του 3D animation. Το animation είναι μια τέχνη που συναρπάζει τα παιδιά. Ο συνδυασμός παραδοσιακών υλικών με τα ψηφιακά οπτικοακουστικά μέσα, δίνει τη δυνατότητα στα παιδιά να εκφραστούν και να συμμετέχουν ενεργά. Και αυτή ακριβώς η**

10/12 Point — Greek

**Τα παιδιά δουλεύουν με υλικά όπως πλαστελίνη, χαρτόνια, παστέλ κλπ., πάνω σε φωτογραφίες των υποβαθμισμένων κομματιών της γειτονιάς τους. Με την μέθοδο στοπ-καρέ και την βοήθεια ψηφιακών μέσων, όπως digital camera και laptop computer, το αποτέλεσμα είναι ένα ταινιάκι κινουμένων σχεδίων. Τα ταινιάκια συμμετέχουν σε Ελληνικά και Διεθνή Κινηματογραφικά Φεστιβάλ, διαδίδοντας με αυτόν τον τρόπο τα μηνύματα που τα ίδια τα παιδιά θέλουν να προβάλουν για το περιβάλλον της πόλης τους.**

8/10 Point — Greek

**Τα ταινιάκια συμμετέχουν σε Ελληνικά και Διεθνή Κινηματογραφικά Φεστιβάλ, διαδίδοντας με αυτόν τον τρόπο τα μηνύματα που τα ίδια τα παιδιά θέλουν να προβάλουν για το περιβάλλον της πόλης τους. Επιπλέον η πόλη των Αθηνών θα συμμετάσχει στον παγκόσμιο διάλογο που έχει ανοίξει για το περιβάλλον μέσα από την οπτικοακουστική επικοινωνία (κινηματογράφος, λ.ν. internet).**

6/8 Point — Greek

**Μέχρι τώρα έχουν υλοποιηθεί 80 εργαστήρια ψηφιακού animation τα οποία παρακολούθησαν 1.100 παιδιά, ενώ έλαβαν μέρος σε διαγωνισμούς και εκδηλώσεις για το περιβάλλον, με συμμετοχή 15 ταινιών μικρού μήκους. Το τεύχος-DVD με τίτλο «Δήμος - Το animation σε λίγες σελίδες» το οποίο διανέμεται στα εργαστήρια δωρεάν στους μαθητές, βραβεύτηκε με το βραβείο «Νέων τεχνολογιών» στο διαγωνισμό οπτικοακουστικών έργων για παιδιά, της Γενικής Γραμματείας Ενημέρωσης-Γενικής Γραμματείας Επικοινωνίας.**

4/6 Point

So voluntary that you'll need one to work, drive a car, travel abroad, use the banking or health system, vote, buy a house, or receive benefits.



## BT1 Extra-Condensed Heavy (VIETNAMESE)

### 7 Weights in BT1 Family:

Thin, Light, Regular, DemiBold, Bold, Heavy, Extra-Condensed Heavy  
 Thin Italic, Light Italic, Italic, DemiBold Italic, Bold Italic, Heavy Italic

**Design:** Jonas Hecksher, 2011  
**Published:** 2011  
**Version no.** 1.001/2011  
**Character set:** PRO

Playtype™ is an online type foundry and concept store, created as a place to play, a home for experimentation and a showcase of our craft.

16/18 Point — Vietnamese

**Ở hơn 83 triệu người, Việt Nam là nước đông dân thứ 13 trên thế giới, trong đó 25% sinh sống tại thành thị và 75% sinh sống ở nông thôn; tỷ lệ tăng dân số hàng năm là 1,18%. Các thành phố đông dân nhất Việt Nam là thành phố Hồ Chí Minh (5 triệu dân), thủ đô Hà Nội (3,5 triệu dân). Hầu hết các thành phố trên cả nước đang trong xu hướng đô thị hóa cao, do đó, dân số tại khu vực này sẽ ngày một tăng nhanh. Việt Nam có cơ cấu dân số trẻ với 52 triệu người trong độ tuổi lao động. Tuy nhiên, số người cao tuổi (trên 60 tuổi - hiện khoảng 6,3 triệu người, chiếm 7,5% dân số cả nước) có chiều hướng gia tăng nhờ điều kiện sống và chăm sóc y tế được nâng cao. Năm 2005, tuổi thọ trung bình của người Việt Nam là 72. Việt Nam là một quốc gia của 54 dân tộc cùng chung sống hòa thuận, trong đó dân tộc Kinh chiếm 86% dân số; 53 dân tộc còn lại có số lượng dao động trên dưới một triệu người như Tày, Nùng, Thái, Mường, Khmer cho đến vài trăm người như dân tộc Ơ Đu và Bơ. Dân tộc Kinh sống rải rác ở trên khắp lãnh thổ, nhưng tập trung nhiều nhất ở các đồng bằng**

200 Point — Vietnamese

# Aảớ4

12/14 Point — Vietnamese

**Với hơn 83 triệu người, Việt Nam là nước đông dân thứ 13 trên thế giới, trong đó 25% sinh sống tại thành thị và 75% sinh sống ở nông thôn; tỷ lệ tăng dân số hàng năm là 1,18%. Các thành phố đông dân nhất Việt Nam là thành phố Hồ Chí Minh (5 triệu dân), thủ đô Hà Nội (3,5 triệu dân). Hầu hết các thành phố trên cả nước đang trong xu hướng đô thị hóa cao, do đó, dân số tại khu vực này**

10/12 Point — Vietnamese

**Việt Nam là một quốc gia của 54 dân tộc cùng chung sống hòa thuận, trong đó dân tộc Kinh chiếm 86% dân số; 53 dân tộc còn lại có số lượng dao động trên dưới một triệu người như Tày, Nùng, Thái, Mường, Khmer cho đến vài trăm người như dân tộc Ơ Đu và Bơ. Dân tộc Kinh sống rải rác ở trên khắp lãnh thổ, nhưng tập trung nhiều nhất ở các đồng bằng và châu thổ các con sông. Họ là chủ nhân của nền văn minh lúa nước. Đa số các dân tộc còn lại sinh sống ở miền núi và trung du, trải dài từ Bắc vào Nam; hầu hết trong số họ sống xen kẽ nhau,**

8/10 Point — Vietnamese

**Các dân tộc thiểu số có trình độ phát triển không đồng đều. Ở Trung du và miền núi phía Bắc, các cư dân ở vùng thấp như Mường, Thái, Tày, Nùng sinh sống chủ yếu bằng canh tác lúa nước và nương rẫy, chăn nuôi gia súc và gia cầm, có một phần hái lượm, săn bắn, có nghề thủ công khá tinh xảo. Các dân tộc thiểu số ở phía Nam sống biệt lập hơn. Trừ người Chăm, Hoa và Khmer sống ở vùng duyên hải miền Trung, Nam Bộ có trình độ phát triển cao hơn, phần lớn các dân tộc còn lại ở Tây Nguyên sống theo tổ chức buôn-làng, kiếm sống dựa vào thiên nhiên mang tính tự cung tự cấp. Tất**

6/8 Point — Vietnamese

**Chính phủ Việt Nam thi hành chính sách bình đẳng, đoàn kết và giúp đỡ lẫn nhau giữa các dân tộc. Trên thực tế, mỗi dân tộc đều bình đẳng trong việc thực hiện quyền phát triển. Chính phủ Việt Nam ưu tiên đầu tư phát triển kinh tế - xã hội các vùng dân tộc và miền núi, trước hết tập trung vào phát triển hệ thống giao thông và cơ sở hạ tầng, xóa đói nghèo; khai thác hiệu quả tiềm năng, thế mạnh của từng vùng đi đôi với bảo vệ bền vững môi trường sinh thái; giữ gìn và phát huy bản sắc văn hóa truyền thống của các dân tộc.**

4/6 Point

*So voluntary that you'll need use to work, drive a car, travel abroad, use the banking or health system, vote, buy a house, or receive benefits.*

# BT1 Extra-Condensed Heavy

## 7 Weights in BT1 Family:

Thin, Light, Regular, DemiBold, Bold, Heavy, Extra-Condensed Heavy  
 Thin Italic, Light Italic, Italic, DemiBold Italic, Bold Italic, Heavy Italic

**Design:** Jonas Hecksher, 2011  
**Published:** 2011  
**Version no.** 1.001/2011  
**Character set:** PRO

## Opentype features

**SUPERIOR SET** | JUST IN BT1 EXTRA-CONDENSED HEAVY

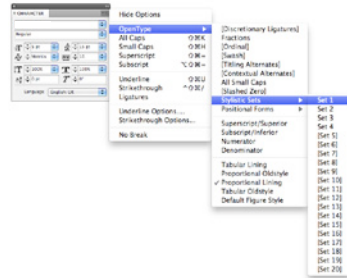
STYLISTIC ALTERNATES (#01)

**QUICK RUN**

DEFAULT FIGURES

QUICK RUN

STYLISTIC SETS 1—4; (inDesign CSS)



STYLISTIC ALTERNATES (#02)

**The quick run**

DEFAULT FIGURES

The quick run

STYLISTIC ALTERNATES (#03)

**»HOME — TO« @H.COM**

DEFAULT FIGURES

»HOME — TO« @H.COM

SUPERIOR (#04)

**Februar 9<sup>TH</sup> — 22<sup>ND</sup> & May 1<sup>ST</sup>**

REGULAR

Februar 9th — 22nd & May 1st

**Playtype™** is an online type foundry and concept store, created as a place to play, a home for experimentation and a showcase of our craft.

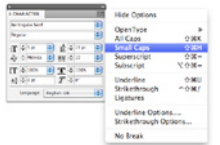
SMALL CAPS

**BT1 Ex-CONDENSED HEAVY**

REGULAR

BT1 Ex-Condensed Heavy

SMALL CAPS; (inDesign CSS)



SMALL CAPS

**(HEADLINE)**

REGULAR

(headline)

SMALL CAPS

**NUMBER 196 \$ 856,95**

REGULAR

Number 196 \$ 856,95

SMALL CAPS

**“THE” OLD/NEW? NM @OH!**

REGULAR

“The” old/new? nm @oh!

**7 Weights in BT1 Family:**

Thin, Light, Regular, DemiBold, Bold, Heavy, Extra-Condensed Heavy  
 Thin Italic, Light Italic, Italic, DemiBold Italic, Bold Italic, Heavy Italic

**Design:** Jonas Hecksher, 2011  
**Published:** 2011  
**Version no.** 1.001/2011  
**Character set:** PRO

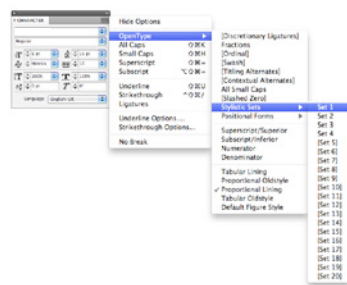
Opentype features

Playtype™ is an online type foundry and concept store, created as a place to play, a home for experimentation and a showcase of our craft.

STYLISTIC ALTERNATES (#01)

**QUICK RUN**  
DEFAULT FIGURES  
 QUICK RUN

STYLISTIC SETS 1—2; (InDesign CSS)



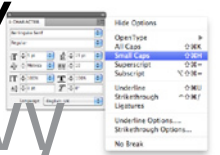
STYLISTIC ALTERNATES (#02)

**»HOME — TO« @H.COM**  
DEFAULT FIGURES  
 »HOME — TO« @H.COM

SMALL CAPS

**BT1 Ex-CONDENSED HEAVY**  
REGULAR  
 BT1 Ex-Condensed Heavy

SMALL CAPS; (InDesign CSS)



SMALL CAPS

**(HEADLINE)**  
REGULAR  
 (headline)

SMALL CAPS

**NUMBER 196 \$ 856,95**  
REGULAR  
 Number 196 \$ 856,95

SMALL CAPS

**“THE” OLD/NEW? NM @OH!**  
REGULAR  
 “The” old/new? nm @oh!

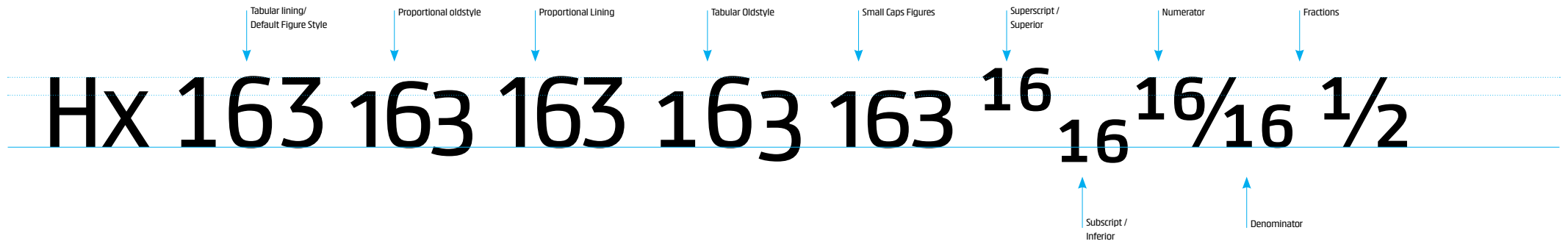
7 Weights in BT1 Family:

Thin, Light, Regular, DemiBold, Bold, Heavy, Extra-Condensed Heavy  
Thin Italic, Light Italic, Italic, DemiBold Italic, Bold Italic, Heavy Italic

**Design:** Jonas Hecksher, 2011  
**Published:** 2011  
**Version no.** 1.001/2011  
**Character set:** PRO

Opentype features — Numbers

Playtype™ is an online type foundry and concept store, created as a place to play, a home for experimentation and a showcase of our craft.

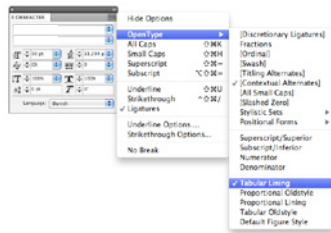


Tabular lining/Default Figure Style  
Use in Tabel

Hx 160005120  
Hx 037519632

Tabular lining/ Default Figure Style  
1 unit

Tabular lining/Default Figure Style (InDesign CSS)

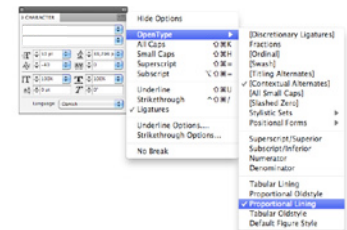


Proportional Lining  
Use in Headlines and Bodytext

Hx 160005120  
Hx 037519632

Porportional lining  
1 unit

Proportional Lining (InDesign CSS)



## BT1 Family

### 7 Weights in BT1 Family:

Thin, Light, Regular, DemiBold, Bold, Heavy, Extra-Condensed Heavy  
 Thin Italic, Light Italic, Italic, DemiBold Italic, Bold Italic, Heavy Italic

**Design:** Jonas Hecksher, 2011  
**Published:** 2011  
**Version no.** 1.001/2011  
**Character set:** PRO

## BT1 Thin — Heavy

PROPORTIONAL OLDSTYLE | STYLISTIC ALTERNATES (S#01)

BT1 Thin

12/13 But it has paid big dividends, bolstering his popularity at home and propelling him onto an international stage often dominated by other large personalities in the region. After a cave-in trapped the miners on Aug. 15, their fate was uncertain, at best. 89 Advisers to Mr. Piñera counseled him not to raise expectations that they could be found alive.

10/11 Laurence Golborne, the mining minister, said publicly that their chances of having survived were slim, comments that bothered many Chileans. But Mr. Piñera, who was in Ecuador when the news came of the lost miners, argued differently. "I had a strong conviction, very deep inside of me, that they were alive, 127 and that was a strong support for my actions," he said in an interview in late August.

BT1 Light

12/13 But it has paid big dividends, bolstering his popularity at home and propelling him onto an international stage often dominated by other large personalities in the region. After a cave-in trapped the miners on Aug. 15, their fate was uncertain, at best. 89 Advisers to Mr. Piñera counseled him not to raise expectations that they could be found alive.

10/11 Laurence Golborne, the mining minister, said publicly that their chances of having survived were slim, comments that bothered many Chileans. But Mr. Piñera, who was in Ecuador when the news came of the lost miners, argued differently. "I had a strong conviction, very deep inside of me, that they were alive, 127 and that was a strong support for my actions," he said in an interview in late August.

BT1 Regular

12/13 But it has paid big dividends, bolstering his popularity at home and propelling him onto an international stage often dominated by other large personalities in the region. After a cave-in trapped the miners on Aug. 15, their fate was uncertain, at best. 89 Advisers to Mr. Piñera counseled him not to raise expectations that they could be found alive.

10/11 Laurence Golborne, the mining minister, said publicly that their chances of having survived were slim, comments that bothered many Chileans. But Mr. Piñera, who was in Ecuador when the news came of the lost miners, argued differently. "I had a strong conviction, very deep inside of me, that they were alive, 127 and that was a strong support for my actions," he said in an interview in late August.

BT1 DemiBold

12/13 But it has paid big dividends, bolstering his popularity at home and propelling him onto an international stage often dominated by other large personalities in the region. After a cave-in trapped the miners on Aug. 15, their fate was uncertain, at best. 89 Advisers to Mr. Piñera counseled him not to raise expectations that they could be found alive.

10/11 Laurence Golborne, the mining minister, said publicly that their chances of having survived were slim, comments that bothered many Chileans. But Mr. Piñera, who was in Ecuador when the news came of the lost miners, argued differently. "I had a strong conviction, very deep inside of me, that they were alive, 127 and that was a strong support for my actions," he said in an interview in late August.

BT1 Bold

12/13 But it has paid big dividends, bolstering his popularity at home and propelling him onto an international stage often dominated by other large personalities in the region. After a cave-in trapped the miners on Aug. 15, their fate was uncertain, at best. 89 Advisers to Mr. Piñera counseled him not to raise expectations that they could be found alive.

10/11 Laurence Golborne, the mining minister, said publicly that their chances of having survived were slim, comments that bothered many Chileans. But Mr. Piñera, who was in Ecuador when the news came of the lost miners, argued differently. "I had a strong conviction, very deep inside of me, that they were alive, 127 and that was a strong support for my actions," he said in an interview in late August.

BT1 Heavy

12/13 But it has paid big dividends, bolstering his popularity at home and propelling him onto an international stage often dominated by other large personalities in the region. After a cave-in trapped the miners on Aug. 15, their fate was uncertain, at best. 89 Advisers to Mr. Piñera counseled him not to raise expectations that they could be found alive.

10/11 Laurence Golborne, the mining minister, said publicly that their chances of having survived were slim, comments that bothered many Chileans. But Mr. Piñera, who was in Ecuador when the news came of the lost miners, argued differently. "I had a strong conviction, very deep inside of me, that they were alive, 127 and that was a strong support for my actions," he said in an interview in late August.

Playtype™ is an online type foundry and concept store, created as a place to play, a home for experimentation and a showcase of our craft.

## BT1 Family

### 7 Weights in BT1 Family:

Thin, Light, Regular, DemiBold, Bold, Heavy, Extra-Condensed Heavy  
 Thin Italic, Light Italic, Italic, DemiBold Italic, Bold Italic, Heavy Italic

**Design:** Jonas Hecksher, 2011  
**Published:** 2011  
**Version no.** 1.001/2011  
**Character set:** PRO

## BT1 Thin — Heavy

SMALL CAPS FIGURES | STYLISTIC ALTERNATES (#01)

BT1 Thin

12/13 BUT IT HAS PAID BIG DIVIDENDS, BOLSTERING HIS POPULARITY AT HOME AND PROPELLING HIM ONTO AN INTERNATIONAL STAGE OFTEN DOMINATED BY OTHER LARGE PERSONALITIES IN THE REGION. AFTER A CAVE-IN TRAPPED THE MINERS ON AUG. 15, THEIR FATE WAS UNCERTAIN, AT BEST. 89 ADVISERS TO MR. PIÑERA COUNSELED HIM NOT TO RAISE EXPECTATIONS THAT THEY COULD BE FOUND ALIVE.

10/11 LAURENCE GOLBORNE, THE MINING MINISTER, SAID PUBLICLY THAT THEIR CHANCES OF HAVING SURVIVED WERE SLIM, COMMENTS THAT BOTHERED MANY CHILEANS. BUT MR. PIÑERA, WHO WAS IN ECUADOR WHEN THE NEWS CAME OF THE LOST MINERS, ARGUED DIFFERENTLY. "I HAD A STRONG CONVICTION, VERY DEEP INSIDE OF ME, THAT THEY WERE ALIVE, 127 AND THAT WAS A STRONG SUPPORT FOR MY ACTIONS," HE SAID IN AN INTERVIEW IN LATE AUGUST.

BT1 Light

12/13 BUT IT HAS PAID BIG DIVIDENDS, BOLSTERING HIS POPULARITY AT HOME AND PROPELLING HIM ONTO AN INTERNATIONAL STAGE OFTEN DOMINATED BY OTHER LARGE PERSONALITIES IN THE REGION. AFTER A CAVE-IN TRAPPED THE MINERS ON AUG. 15, THEIR FATE WAS UNCERTAIN, AT BEST. 89 ADVISERS TO MR. PIÑERA COUNSELED HIM NOT TO RAISE EXPECTATIONS THAT THEY COULD BE FOUND ALIVE.

10/11 LAURENCE GOLBORNE, THE MINING MINISTER, SAID PUBLICLY THAT THEIR CHANCES OF HAVING SURVIVED WERE SLIM, COMMENTS THAT BOTHERED MANY CHILEANS. BUT MR. PIÑERA, WHO WAS IN ECUADOR WHEN THE NEWS CAME OF THE LOST MINERS, ARGUED DIFFERENTLY. "I HAD A STRONG CONVICTION, VERY DEEP INSIDE OF ME, THAT THEY WERE ALIVE, 127 AND THAT WAS A STRONG SUPPORT FOR MY ACTIONS," HE SAID IN AN INTERVIEW IN LATE AUGUST.

BT1 Regular

12/13 BUT IT HAS PAID BIG DIVIDENDS, BOLSTERING HIS POPULARITY AT HOME AND PROPELLING HIM ONTO AN INTERNATIONAL STAGE OFTEN DOMINATED BY OTHER LARGE PERSONALITIES IN THE REGION. AFTER A CAVE-IN TRAPPED THE MINERS ON AUG. 15, THEIR FATE WAS UNCERTAIN, AT BEST. 89 ADVISERS TO MR. PIÑERA COUNSELED HIM NOT TO RAISE EXPECTATIONS THAT THEY COULD BE FOUND ALIVE.

10/11 LAURENCE GOLBORNE, THE MINING MINISTER, SAID PUBLICLY THAT THEIR CHANCES OF HAVING SURVIVED WERE SLIM, COMMENTS THAT BOTHERED MANY CHILEANS. BUT MR. PIÑERA, WHO WAS IN ECUADOR WHEN THE NEWS CAME OF THE LOST MINERS, ARGUED DIFFERENTLY. "I HAD A STRONG CONVICTION, VERY DEEP INSIDE OF ME, THAT THEY WERE ALIVE, 127 AND THAT WAS A STRONG SUPPORT FOR MY ACTIONS," HE SAID IN AN INTERVIEW IN LATE AUGUST.

BT1 DemiBold

12/13 BUT IT HAS PAID BIG DIVIDENDS, BOLSTERING HIS POPULARITY AT HOME AND PROPELLING HIM ONTO AN INTERNATIONAL STAGE OFTEN DOMINATED BY OTHER LARGE PERSONALITIES IN THE REGION. AFTER A CAVE-IN TRAPPED THE MINERS ON AUG. 15, THEIR FATE WAS UNCERTAIN, AT BEST. 89 ADVISERS TO MR. PIÑERA COUNSELED HIM NOT TO RAISE EXPECTATIONS THAT THEY COULD BE FOUND ALIVE.

10/11 LAURENCE GOLBORNE, THE MINING MINISTER, SAID PUBLICLY THAT THEIR CHANCES OF HAVING SURVIVED WERE SLIM, COMMENTS THAT BOTHERED MANY CHILEANS. BUT MR. PIÑERA, WHO WAS IN ECUADOR WHEN THE NEWS CAME OF THE LOST MINERS, ARGUED DIFFERENTLY. "I HAD A STRONG CONVICTION, VERY DEEP INSIDE OF ME, THAT THEY WERE ALIVE, 127 AND THAT WAS A STRONG SUPPORT FOR MY ACTIONS," HE SAID IN AN INTERVIEW IN LATE AUGUST.

BT1 Bold

12/13 BUT IT HAS PAID BIG DIVIDENDS, BOLSTERING HIS POPULARITY AT HOME AND PROPELLING HIM ONTO AN INTERNATIONAL STAGE OFTEN DOMINATED BY OTHER LARGE PERSONALITIES IN THE REGION. AFTER A CAVE-IN TRAPPED THE MINERS ON AUG. 15, THEIR FATE WAS UNCERTAIN, AT BEST. 89 ADVISERS TO MR. PIÑERA COUNSELED HIM NOT TO RAISE EXPECTATIONS THAT THEY COULD BE FOUND ALIVE.

10/11 LAURENCE GOLBORNE, THE MINING MINISTER, SAID PUBLICLY THAT THEIR CHANCES OF HAVING SURVIVED WERE SLIM, COMMENTS THAT BOTHERED MANY CHILEANS. BUT MR. PIÑERA, WHO WAS IN ECUADOR WHEN THE NEWS CAME OF THE LOST MINERS, ARGUED DIFFERENTLY. "I HAD A STRONG CONVICTION, VERY DEEP INSIDE OF ME, THAT THEY WERE ALIVE, 127 AND THAT WAS A STRONG SUPPORT FOR MY ACTIONS," HE SAID IN AN INTERVIEW IN LATE AUGUST.

BT1 Heavy

12/13 BUT IT HAS PAID BIG DIVIDENDS, BOLSTERING HIS POPULARITY AT HOME AND PROPELLING HIM ONTO AN INTERNATIONAL STAGE OFTEN DOMINATED BY OTHER LARGE PERSONALITIES IN THE REGION. AFTER A CAVE-IN TRAPPED THE MINERS ON AUG. 15, THEIR FATE WAS UNCERTAIN, AT BEST. 89 ADVISERS TO MR. PIÑERA COUNSELED HIM NOT TO RAISE EXPECTATIONS THAT THEY COULD BE FOUND ALIVE.

10/11 LAURENCE GOLBORNE, THE MINING MINISTER, SAID PUBLICLY THAT THEIR CHANCES OF HAVING SURVIVED WERE SLIM, COMMENTS THAT BOTHERED MANY CHILEANS. BUT MR. PIÑERA, WHO WAS IN ECUADOR WHEN THE NEWS CAME OF THE LOST MINERS, ARGUED DIFFERENTLY. "I HAD A STRONG CONVICTION, VERY DEEP INSIDE OF ME, THAT THEY WERE ALIVE, 127 AND THAT WAS A STRONG SUPPORT FOR MY ACTIONS," HE SAID IN AN INTERVIEW IN LATE AUGUST.

Playtype™ is an online type foundry and concept store, created as a place to play, a home for experimentation and a showcase of our craft.

## BT1 Family

### 7 Weights in BT1 Family:

Thin, Light, Regular, DemiBold, Bold, Heavy, Extra-Condensed Heavy  
 Thin Italic, Light Italic, Italic, DemiBold Italic, Bold Italic, Heavy Italic

**Design:** Jonas Hecksher, 2011  
**Published:** 2011  
**Version no.** 1.001/2011  
**Character set:** PRO

## BT1 Thin — Heavy

PROPORTIONAL LINING | STYLISTIC ALTERNATES (#02)

BT1 Thin

12/13 BUT IT HAS PAID BIG DIVIDENDS, BOLSTERING HIS POPULARITY AT HOME AND PROPELLING HIM ONTO AN INTERNATIONAL STAGE OFTEN DOMINATED BY OTHER LARGE PERSONALITIES IN THE REGION. AFTER A CAVE-IN TRAPPED THE MINERS ON AUG. 15, THEIR FATE WAS UNCERTAIN, AT BEST. 89 ADVISERS TO MR. PIÑERA COUNSELED HIM NOT TO RAISE EXPECTATIONS THAT THEY COULD BE FOUND ALIVE.

10/11 LAURENCE GOLBORNE, THE MINING MINISTER, SAID PUBLICLY THAT THEIR CHANCES OF HAVING SURVIVED WERE SLIM, COMMENTS THAT BOTHERED MANY CHILEANS. BUT MR. PIÑERA, WHO WAS IN ECUADOR WHEN THE NEWS CAME OF THE LOST MINERS, ARGUED DIFFERENTLY. "I HAD A STRONG CONVICTION, VERY DEEP INSIDE OF ME, THAT THEY WERE ALIVE, 127 AND THAT WAS A STRONG SUPPORT FOR MY ACTIONS," HE SAID IN AN INTERVIEW IN LATE AUGUST.

BT1 Light

12/13 BUT IT HAS PAID BIG DIVIDENDS, BOLSTERING HIS POPULARITY AT HOME AND PROPELLING HIM ONTO AN INTERNATIONAL STAGE OFTEN DOMINATED BY OTHER LARGE PERSONALITIES IN THE REGION. AFTER A CAVE-IN TRAPPED THE MINERS ON AUG. 15, THEIR FATE WAS UNCERTAIN, AT BEST. 89 ADVISERS TO MR. PIÑERA COUNSELED HIM NOT TO RAISE EXPECTATIONS THAT THEY COULD BE FOUND ALIVE.

10/11 LAURENCE GOLBORNE, THE MINING MINISTER, SAID PUBLICLY THAT THEIR CHANCES OF HAVING SURVIVED WERE SLIM, COMMENTS THAT BOTHERED MANY CHILEANS. BUT MR. PIÑERA, WHO WAS IN ECUADOR WHEN THE NEWS CAME OF THE LOST MINERS, ARGUED DIFFERENTLY. "I HAD A STRONG CONVICTION, VERY DEEP INSIDE OF ME, THAT THEY WERE ALIVE, 127 AND THAT WAS A STRONG SUPPORT FOR MY ACTIONS," HE SAID IN AN INTERVIEW IN LATE AUGUST.

BT1 Regular

12/13 BUT IT HAS PAID BIG DIVIDENDS, BOLSTERING HIS POPULARITY AT HOME AND PROPELLING HIM ONTO AN INTERNATIONAL STAGE OFTEN DOMINATED BY OTHER LARGE PERSONALITIES IN THE REGION. AFTER A CAVE-IN TRAPPED THE MINERS ON AUG. 15, THEIR FATE WAS UNCERTAIN, AT BEST. 89 ADVISERS TO MR. PIÑERA COUNSELED HIM NOT TO RAISE EXPECTATIONS THAT THEY COULD BE FOUND ALIVE.

10/11 LAURENCE GOLBORNE, THE MINING MINISTER, SAID PUBLICLY THAT THEIR CHANCES OF HAVING SURVIVED WERE SLIM, COMMENTS THAT BOTHERED MANY CHILEANS. BUT MR. PIÑERA, WHO WAS IN ECUADOR WHEN THE NEWS CAME OF THE LOST MINERS, ARGUED DIFFERENTLY. "I HAD A STRONG CONVICTION, VERY DEEP INSIDE OF ME, THAT THEY WERE ALIVE, 127 AND THAT WAS A STRONG SUPPORT FOR MY ACTIONS," HE SAID IN AN INTERVIEW IN LATE AUGUST.

BT1 DemiBold

12/13 BUT IT HAS PAID BIG DIVIDENDS, BOLSTERING HIS POPULARITY AT HOME AND PROPELLING HIM ONTO AN INTERNATIONAL STAGE OFTEN DOMINATED BY OTHER LARGE PERSONALITIES IN THE REGION. AFTER A CAVE-IN TRAPPED THE MINERS ON AUG. 15, THEIR FATE WAS UNCERTAIN, AT BEST. 89 ADVISERS TO MR. PIÑERA COUNSELED HIM NOT TO RAISE EXPECTATIONS THAT THEY COULD BE FOUND ALIVE.

10/11 LAURENCE GOLBORNE, THE MINING MINISTER, SAID PUBLICLY THAT THEIR CHANCES OF HAVING SURVIVED WERE SLIM, COMMENTS THAT BOTHERED MANY CHILEANS. BUT MR. PIÑERA, WHO WAS IN ECUADOR WHEN THE NEWS CAME OF THE LOST MINERS, ARGUED DIFFERENTLY. "I HAD A STRONG CONVICTION, VERY DEEP INSIDE OF ME, THAT THEY WERE ALIVE, 127 AND THAT WAS A STRONG SUPPORT FOR MY ACTIONS," HE SAID IN AN INTERVIEW IN

BT1 Bold

12/13 BUT IT HAS PAID BIG DIVIDENDS, BOLSTERING HIS POPULARITY AT HOME AND PROPELLING HIM ONTO AN INTERNATIONAL STAGE OFTEN DOMINATED BY OTHER LARGE PERSONALITIES IN THE REGION. AFTER A CAVE-IN TRAPPED THE MINERS ON AUG. 15, THEIR FATE WAS UNCERTAIN, AT BEST. 89 ADVISERS TO MR. PIÑERA COUNSELED HIM NOT TO RAISE EXPECTATIONS THAT THEY COULD BE FOUND ALIVE.

10/11 LAURENCE GOLBORNE, THE MINING MINISTER, SAID PUBLICLY THAT THEIR CHANCES OF HAVING SURVIVED WERE SLIM, COMMENTS THAT BOTHERED MANY CHILEANS. BUT MR. PIÑERA, WHO WAS IN ECUADOR WHEN THE NEWS CAME OF THE LOST MINERS, ARGUED DIFFERENTLY. "I HAD A STRONG CONVICTION, VERY DEEP INSIDE OF ME, THAT THEY WERE ALIVE, 127 AND THAT WAS A STRONG

BT1 Heavy

12/13 BUT IT HAS PAID BIG DIVIDENDS, BOLSTERING HIS POPULARITY AT HOME AND PROPELLING HIM ONTO AN INTERNATIONAL STAGE OFTEN DOMINATED BY OTHER LARGE PERSONALITIES IN THE REGION. AFTER A CAVE-IN TRAPPED THE MINERS ON AUG. 15, THEIR FATE WAS UNCERTAIN, AT BEST. 89 ADVISERS TO MR. PIÑERA COUNSELED HIM NOT TO RAISE EXPECTATIONS THAT THEY COULD BE FOUND ALIVE.

10/11 LAURENCE GOLBORNE, THE MINING MINISTER, SAID PUBLICLY THAT THEIR CHANCES OF HAVING SURVIVED WERE SLIM, COMMENTS THAT BOTHERED MANY CHILEANS. BUT MR. PIÑERA, WHO WAS IN ECUADOR WHEN THE NEWS CAME OF THE LOST MINERS, ARGUED DIFFERENTLY. "I HAD A STRONG CONVICTION, VERY DEEP INSIDE OF ME, THAT THEY WERE ALIVE, 127 AND THAT WAS A

Playtype™ is an online type foundry and concept store, created as a place to play, a home for experimentation and a showcase of our craft.

## BT1 Family

### 7 Weights in BT1 Family:

Thin, Light, Regular, DemiBold, Bold, Heavy, Extra-Condensed Heavy  
 Thin Italic, Light Italic, Italic, DemiBold Italic, Bold Italic, Heavy Italic

**Design:** Jonas Hecksher, 2011  
**Published:** 2011  
**Version no.** 1.001/2011  
**Character set:** PRO

## BT1 Thin Italic — Heavy Italic

PROPORTIONAL OLDSTYLE | STYLISTIC ALTERNATES (\$#01)

BT1 Thin Italic

12/13 *But it has paid big dividends, bolstering his popularity at home and propelling him onto an international stage often dominated by other large personalities in the region. After a cave-in trapped the miners on Aug. 15, their fate was uncertain, at best. 89 Advisers to Mr. Piñera counseled him not to raise expectations that they could be found alive.*

10/11 *Laurence Golborne, the mining minister, said publicly that their chances of having survived were slim, comments that bothered many Chileans. But Mr. Piñera, who was in Ecuador when the news came of the lost miners, argued differently. "I had a strong conviction, very deep inside of me, that they were alive, 127 and that was a strong support for my actions," he said in an interview in late August.*

BT1 Light Italic

12/13 *But it has paid big dividends, bolstering his popularity at home and propelling him onto an international stage often dominated by other large personalities in the region. After a cave-in trapped the miners on Aug. 15, their fate was uncertain, at best. 89 Advisers to Mr. Piñera counseled him not to raise expectations that they could be found alive.*

10/11 *Laurence Golborne, the mining minister, said publicly that their chances of having survived were slim, comments that bothered many Chileans. But Mr. Piñera, who was in Ecuador when the news came of the lost miners, argued differently. "I had a strong conviction, very deep inside of me, that they were alive, 127 and that was a strong support for my actions," he said in an interview in late August.*

BT1 Italic

12/13 *But it has paid big dividends, bolstering his popularity at home and propelling him onto an international stage often dominated by other large personalities in the region. After a cave-in trapped the miners on Aug. 15, their fate was uncertain, at best. 89 Advisers to Mr. Piñera counseled him not to raise expectations that they could be found alive.*

10/11 *Laurence Golborne, the mining minister, said publicly that their chances of having survived were slim, comments that bothered many Chileans. But Mr. Piñera, who was in Ecuador when the news came of the lost miners, argued differently. "I had a strong conviction, very deep inside of me, that they were alive, 127 and that was a strong support for my actions," he said in an interview in late August.*

BT1 DemiBold Italic

12/13 *But it has paid big dividends, bolstering his popularity at home and propelling him onto an international stage often dominated by other large personalities in the region. After a cave-in trapped the miners on Aug. 15, their fate was uncertain, at best. 89 Advisers to Mr. Piñera counseled him not to raise expectations that they could be found alive.*

10/11 *Laurence Golborne, the mining minister, said publicly that their chances of having survived were slim, comments that bothered many Chileans. But Mr. Piñera, who was in Ecuador when the news came of the lost miners, argued differently. "I had a strong conviction, very deep inside of me, that they were alive, 127 and that was a strong support for my actions," he said in an interview in late August.*

BT1 Bold Italic

12/13 *But it has paid big dividends, bolstering his popularity at home and propelling him onto an international stage often dominated by other large personalities in the region. After a cave-in trapped the miners on Aug. 15, their fate was uncertain, at best. 89 Advisers to Mr. Piñera counseled him not to raise expectations that they could be found alive.*

10/11 *Laurence Golborne, the mining minister, said publicly that their chances of having survived were slim, comments that bothered many Chileans. But Mr. Piñera, who was in Ecuador when the news came of the lost miners, argued differently. "I had a strong conviction, very deep inside of me, that they were alive, 127 and that was a strong support for my actions," he said in an interview in late August.*

BT1 Heavy

12/13 ***But it has paid big dividends, bolstering his popularity at home and propelling him onto an international stage often dominated by other large personalities in the region. After a cave-in trapped the miners on Aug. 15, their fate was uncertain, at best. 89 Advisers to Mr. Piñera counseled him not to raise expectations that they could be found alive.***

10/11 ***Laurence Golborne, the mining minister, said publicly that their chances of having survived were slim, comments that bothered many Chileans. But Mr. Piñera, who was in Ecuador when the news came of the lost miners, argued differently. "I had a strong conviction, very deep inside of me, that they were alive, 127 and that was a strong support for my actions," he said in an interview in late August.***

Playtype™ is an online type foundry and concept store, created as a place to play, a home for experimentation and a showcase of our craft.



## BT1 Family

### 7 Weights in BT1 Family:

Thin, Light, Regular, DemiBold, Bold, Heavy, Extra-Condensed Heavy  
 Thin Italic, Light Italic, Italic, DemiBold Italic, Bold Italic, Heavy Italic

**Design:** Jonas Hecksher, 2011  
**Published:** 2011  
**Version no.** 1.001/2011  
**Character set:** PRO

## BT1 Thin Italic — Heavy Italic

PROPORTIONAL LINING | STYLISTIC ALTERNATES (#02)

BT1 Thin Italic

12/13 BUT IT HAS PAID BIG DIVIDENDS, BOLSTERING HIS POPULARITY AT HOME AND PROPELLING HIM ONTO AN INTERNATIONAL STAGE OFTEN DOMINATED BY OTHER LARGE PERSONALITIES IN THE REGION. AFTER A CAVE-IN TRAPPED THE MINERS ON AUG. 15, THEIR FATE WAS UNCERTAIN, AT BEST. 89 ADVISERS TO MR. PIÑERA COUNSELED HIM NOT TO RAISE EXPECTATIONS THAT THEY COULD BE FOUND ALIVE.

10/11 LAURENCE GOLBORNE, THE MINING MINISTER, SAID PUBLICLY THAT THEIR CHANCES OF HAVING SURVIVED WERE SLIM, COMMENTS THAT BOTHERED MANY CHILEANS. BUT MR. PIÑERA, WHO WAS IN ECUADOR WHEN THE NEWS CAME OF THE LOST MINERS, ARGUED DIFFERENTLY. "I HAD A STRONG CONVICTION, VERY DEEP INSIDE OF ME, THAT THEY WERE ALIVE, 127 AND THAT WAS A STRONG SUPPORT FOR MY ACTIONS," HE SAID IN AN INTERVIEW IN LATE AUGUST.

BT1 Light Italic

12/13 BUT IT HAS PAID BIG DIVIDENDS, BOLSTERING HIS POPULARITY AT HOME AND PROPELLING HIM ONTO AN INTERNATIONAL STAGE OFTEN DOMINATED BY OTHER LARGE PERSONALITIES IN THE REGION. AFTER A CAVE-IN TRAPPED THE MINERS ON AUG. 15, THEIR FATE WAS UNCERTAIN, AT BEST. 89 ADVISERS TO MR. PIÑERA COUNSELED HIM NOT TO RAISE EXPECTATIONS THAT THEY COULD BE FOUND ALIVE.

10/11 LAURENCE GOLBORNE, THE MINING MINISTER, SAID PUBLICLY THAT THEIR CHANCES OF HAVING SURVIVED WERE SLIM, COMMENTS THAT BOTHERED MANY CHILEANS. BUT MR. PIÑERA, WHO WAS IN ECUADOR WHEN THE NEWS CAME OF THE LOST MINERS, ARGUED DIFFERENTLY. "I HAD A STRONG CONVICTION, VERY DEEP INSIDE OF ME, THAT THEY WERE ALIVE, 127 AND THAT WAS A STRONG SUPPORT FOR MY ACTIONS," HE SAID IN AN INTERVIEW IN LATE AUGUST.

BT1 Italic

12/13 BUT IT HAS PAID BIG DIVIDENDS, BOLSTERING HIS POPULARITY AT HOME AND PROPELLING HIM ONTO AN INTERNATIONAL STAGE OFTEN DOMINATED BY OTHER LARGE PERSONALITIES IN THE REGION. AFTER A CAVE-IN TRAPPED THE MINERS ON AUG. 15, THEIR FATE WAS UNCERTAIN, AT BEST. 89 ADVISERS TO MR. PIÑERA COUNSELED HIM NOT TO RAISE EXPECTATIONS THAT THEY COULD BE FOUND ALIVE.

10/11 LAURENCE GOLBORNE, THE MINING MINISTER, SAID PUBLICLY THAT THEIR CHANCES OF HAVING SURVIVED WERE SLIM, COMMENTS THAT BOTHERED MANY CHILEANS. BUT MR. PIÑERA, WHO WAS IN ECUADOR WHEN THE NEWS CAME OF THE LOST MINERS, ARGUED DIFFERENTLY. "I HAD A STRONG CONVICTION, VERY DEEP INSIDE OF ME, THAT THEY WERE ALIVE, 127 AND THAT WAS A STRONG SUPPORT FOR MY ACTIONS," HE SAID IN AN INTERVIEW IN LATE AUGUST.

BT1 DemiBold Italic

12/13 BUT IT HAS PAID BIG DIVIDENDS, BOLSTERING HIS POPULARITY AT HOME AND PROPELLING HIM ONTO AN INTERNATIONAL STAGE OFTEN DOMINATED BY OTHER LARGE PERSONALITIES IN THE REGION. AFTER A CAVE-IN TRAPPED THE MINERS ON AUG. 15, THEIR FATE WAS UNCERTAIN, AT BEST. 89 ADVISERS TO MR. PIÑERA COUNSELED HIM NOT TO RAISE EXPECTATIONS THAT THEY COULD BE FOUND ALIVE.

10/11 LAURENCE GOLBORNE, THE MINING MINISTER, SAID PUBLICLY THAT THEIR CHANCES OF HAVING SURVIVED WERE SLIM, COMMENTS THAT BOTHERED MANY CHILEANS. BUT MR. PIÑERA, WHO WAS IN ECUADOR WHEN THE NEWS CAME OF THE LOST MINERS, ARGUED DIFFERENTLY. "I HAD A STRONG CONVICTION, VERY DEEP INSIDE OF ME, THAT THEY WERE ALIVE, 127 AND THAT WAS A STRONG SUPPORT FOR MY ACTIONS," HE SAID IN AN INTERVIEW IN LATE AUGUST.

BT1 Bold Italic

12/13 BUT IT HAS PAID BIG DIVIDENDS, BOLSTERING HIS POPULARITY AT HOME AND PROPELLING HIM ONTO AN INTERNATIONAL STAGE OFTEN DOMINATED BY OTHER LARGE PERSONALITIES IN THE REGION. AFTER A CAVE-IN TRAPPED THE MINERS ON AUG. 15, THEIR FATE WAS UNCERTAIN, AT BEST. 89 ADVISERS TO MR. PIÑERA COUNSELED HIM NOT TO RAISE EXPECTATIONS THAT THEY COULD BE FOUND ALIVE.

10/11 LAURENCE GOLBORNE, THE MINING MINISTER, SAID PUBLICLY THAT THEIR CHANCES OF HAVING SURVIVED WERE SLIM, COMMENTS THAT BOTHERED MANY CHILEANS. BUT MR. PIÑERA, WHO WAS IN ECUADOR WHEN THE NEWS CAME OF THE LOST MINERS, ARGUED DIFFERENTLY. "I HAD A STRONG CONVICTION, VERY DEEP INSIDE OF ME, THAT THEY WERE ALIVE, 127 AND THAT WAS A STRONG SUPPORT FOR MY ACTIONS," HE SAID IN AN INTERVIEW IN LATE AUGUST.

BT1 Heavy

12/13 BUT IT HAS PAID BIG DIVIDENDS, BOLSTERING HIS POPULARITY AT HOME AND PROPELLING HIM ONTO AN INTERNATIONAL STAGE OFTEN DOMINATED BY OTHER LARGE PERSONALITIES IN THE REGION. AFTER A CAVE-IN TRAPPED THE MINERS ON AUG. 15, THEIR FATE WAS UNCERTAIN, AT BEST. 89 ADVISERS TO MR. PIÑERA COUNSELED HIM NOT TO RAISE EXPECTATIONS THAT THEY COULD BE FOUND ALIVE.

10/11 LAURENCE GOLBORNE, THE MINING MINISTER, SAID PUBLICLY THAT THEIR CHANCES OF HAVING SURVIVED WERE SLIM, COMMENTS THAT BOTHERED MANY CHILEANS. BUT MR. PIÑERA, WHO WAS IN ECUADOR WHEN THE NEWS CAME OF THE LOST MINERS, ARGUED DIFFERENTLY. "I HAD A STRONG CONVICTION, VERY DEEP INSIDE OF ME, THAT THEY WERE ALIVE, 127 AND THAT WAS A STRONG SUPPORT FOR MY ACTIONS," HE SAID IN AN INTERVIEW IN LATE AUGUST.

Playtype™ is an online type foundry and concept store, created as a place to play, a home for experimentation and a showcase of our craft.

## BT1 Family

### 7 Weights in BT1 Family:

Thin, Light, Regular, DemiBold, Bold, Heavy, Extra-Condensed Heavy  
 Thin Italic, Light Italic, Italic, DemiBold Italic, Bold Italic, Heavy Italic

**Design:** Jonas Hecksher, 2011  
**Published:** 2011  
**Version no.** 1.001/2011  
**Character set:** PRO

## BT1 Thin Italic — Heavy Italic

SMALL CAPS FIGURES | STYLISTIC ALTERNATES (#001)

BT1 Thin Italic

12/13 BUT IT HAS PAID BIG DIVIDENDS, BOLSTERING HIS POPULARITY AT HOME AND PROPELLING HIM ONTO AN INTERNATIONAL STAGE OFTEN DOMINATED BY OTHER LARGE PERSONALITIES IN THE REGION. AFTER A CAVE-IN TRAPPED THE MINERS ON AUG. 15, THEIR FATE WAS UNCERTAIN, AT BEST. 89 ADVISERS TO MR. PIÑERA COUNSELED HIM NOT TO RAISE EXPECTATIONS THAT THEY COULD BE FOUND ALIVE.

10/11 LAURENCE GOLBORNE, THE MINING MINISTER, SAID PUBLICLY THAT THEIR CHANCES OF HAVING SURVIVED WERE SLIM, COMMENTS THAT BOTHERED MANY CHILEANS. BUT MR. PIÑERA, WHO WAS IN ECUADOR WHEN THE NEWS CAME OF THE LOST MINERS, ARGUED DIFFERENTLY. "I HAD A STRONG CONVICTION, VERY DEEP INSIDE OF ME, THAT THEY WERE ALIVE, 127 AND THAT WAS A STRONG SUPPORT FOR MY ACTIONS," HE SAID IN AN INTERVIEW IN LATE AUGUST.

BT1 Light Italic

12/13 BUT IT HAS PAID BIG DIVIDENDS, BOLSTERING HIS POPULARITY AT HOME AND PROPELLING HIM ONTO AN INTERNATIONAL STAGE OFTEN DOMINATED BY OTHER LARGE PERSONALITIES IN THE REGION. AFTER A CAVE-IN TRAPPED THE MINERS ON AUG. 15, THEIR FATE WAS UNCERTAIN, AT BEST. 89 ADVISERS TO MR. PIÑERA COUNSELED HIM NOT TO RAISE EXPECTATIONS THAT THEY COULD BE FOUND ALIVE.

10/11 LAURENCE GOLBORNE, THE MINING MINISTER, SAID PUBLICLY THAT THEIR CHANCES OF HAVING SURVIVED WERE SLIM, COMMENTS THAT BOTHERED MANY CHILEANS. BUT MR. PIÑERA, WHO WAS IN ECUADOR WHEN THE NEWS CAME OF THE LOST MINERS, ARGUED DIFFERENTLY. "I HAD A STRONG CONVICTION, VERY DEEP INSIDE OF ME, THAT THEY WERE ALIVE, 127 AND THAT WAS A STRONG SUPPORT FOR MY ACTIONS," HE SAID IN AN INTERVIEW IN LATE AUGUST.

BT1 Italic

12/13 BUT IT HAS PAID BIG DIVIDENDS, BOLSTERING HIS POPULARITY AT HOME AND PROPELLING HIM ONTO AN INTERNATIONAL STAGE OFTEN DOMINATED BY OTHER LARGE PERSONALITIES IN THE REGION. AFTER A CAVE-IN TRAPPED THE MINERS ON AUG. 15, THEIR FATE WAS UNCERTAIN, AT BEST. 89 ADVISERS TO MR. PIÑERA COUNSELED HIM NOT TO RAISE EXPECTATIONS THAT THEY COULD BE FOUND ALIVE.

10/11 LAURENCE GOLBORNE, THE MINING MINISTER, SAID PUBLICLY THAT THEIR CHANCES OF HAVING SURVIVED WERE SLIM, COMMENTS THAT BOTHERED MANY CHILEANS. BUT MR. PIÑERA, WHO WAS IN ECUADOR WHEN THE NEWS CAME OF THE LOST MINERS, ARGUED DIFFERENTLY. "I HAD A STRONG CONVICTION, VERY DEEP INSIDE OF ME, THAT THEY WERE ALIVE, 127 AND THAT WAS A STRONG SUPPORT FOR MY ACTIONS," HE SAID IN AN INTERVIEW IN LATE AUGUST.

BT1 DemiBold Italic

12/13 BUT IT HAS PAID BIG DIVIDENDS, BOLSTERING HIS POPULARITY AT HOME AND PROPELLING HIM ONTO AN INTERNATIONAL STAGE OFTEN DOMINATED BY OTHER LARGE PERSONALITIES IN THE REGION. AFTER A CAVE-IN TRAPPED THE MINERS ON AUG. 15, THEIR FATE WAS UNCERTAIN, AT BEST. 89 ADVISERS TO MR. PIÑERA COUNSELED HIM NOT TO RAISE EXPECTATIONS THAT THEY COULD BE FOUND ALIVE.

10/11 LAURENCE GOLBORNE, THE MINING MINISTER, SAID PUBLICLY THAT THEIR CHANCES OF HAVING SURVIVED WERE SLIM, COMMENTS THAT BOTHERED MANY CHILEANS. BUT MR. PIÑERA, WHO WAS IN ECUADOR WHEN THE NEWS CAME OF THE LOST MINERS, ARGUED DIFFERENTLY. "I HAD A STRONG CONVICTION, VERY DEEP INSIDE OF ME, THAT THEY WERE ALIVE, 127 AND THAT WAS A STRONG SUPPORT FOR MY ACTIONS," HE SAID IN AN INTERVIEW IN

BT1 Bold Italic

12/13 BUT IT HAS PAID BIG DIVIDENDS, BOLSTERING HIS POPULARITY AT HOME AND PROPELLING HIM ONTO AN INTERNATIONAL STAGE OFTEN DOMINATED BY OTHER LARGE PERSONALITIES IN THE REGION. AFTER A CAVE-IN TRAPPED THE MINERS ON AUG. 15, THEIR FATE WAS UNCERTAIN, AT BEST. 89 ADVISERS TO MR. PIÑERA COUNSELED HIM NOT TO RAISE EXPECTATIONS THAT THEY COULD BE FOUND ALIVE.

10/11 LAURENCE GOLBORNE, THE MINING MINISTER, SAID PUBLICLY THAT THEIR CHANCES OF HAVING SURVIVED WERE SLIM, COMMENTS THAT BOTHERED MANY CHILEANS. BUT MR. PIÑERA, WHO WAS IN ECUADOR WHEN THE NEWS CAME OF THE LOST MINERS, ARGUED DIFFERENTLY. "I HAD A STRONG CONVICTION, VERY DEEP INSIDE OF ME, THAT THEY WERE ALIVE, 127 AND THAT WAS A STRONG SUPPORT FOR MY ACTIONS,"

BT1 Heavy

12/13 BUT IT HAS PAID BIG DIVIDENDS, BOLSTERING HIS POPULARITY AT HOME AND PROPELLING HIM ONTO AN INTERNATIONAL STAGE OFTEN DOMINATED BY OTHER LARGE PERSONALITIES IN THE REGION. AFTER A CAVE-IN TRAPPED THE MINERS ON AUG. 15, THEIR FATE WAS UNCERTAIN, AT BEST. 89 ADVISERS TO MR. PIÑERA COUNSELED HIM NOT TO RAISE EXPECTATIONS THAT THEY COULD BE FOUND ALIVE.

10/11 LAURENCE GOLBORNE, THE MINING MINISTER, SAID PUBLICLY THAT THEIR CHANCES OF HAVING SURVIVED WERE SLIM, COMMENTS THAT BOTHERED MANY CHILEANS. BUT MR. PIÑERA, WHO WAS IN ECUADOR WHEN THE NEWS CAME OF THE LOST MINERS, ARGUED DIFFERENTLY. "I HAD A STRONG CONVICTION, VERY DEEP INSIDE OF ME, THAT THEY WERE ALIVE, 127 AND THAT WAS A STRONG SUPPORT FOR MY ACTIONS,"

Playtype™ is an online type foundry and concept store, created as a place to play, a home for experimentation and a showcase of our craft.

## BT1 Extra-Condensed Heavy

LATIN | CYRILLIC, GREEK & VIETNAMESE

BT1 Extra-Condensed Heavy

**12/13 But it has paid big dividends, bolstering his popularity at home and propelling him onto an international stage often dominated by other large personalities in the region. After a cave-in trapped the miners on Aug. 15, their fate was uncertain, at best. 89 Advisers to Mr. Piñera counseled him not to raise expectations that they could be found alive.**

**10/11 Laurence Golborne, the mining minister, said publicly that their chances of having survived were slim, comments that bothered many Chileans. But Mr. Piñera, who was in Ecuador when the news came of the lost miners, argued differently. “I had a strong conviction, very deep inside of me, that they were alive, 127 and that was a strong support for my actions,” he said in an interview in late August.**

BT1 Extra-Condensed Heavy

**12/13 BUT IT HAS PAID BIG DIVIDENDS, BOLSTERING HIS POPULARITY AT HOME AND PROPELLING HIM ONTO AN INTERNATIONAL STAGE OFTEN DOMINATED BY OTHER LARGE PERSONALITIES IN THE REGION. AFTER A CAVE-IN TRAPPED THE MINERS ON AUG. 15, THEIR FATE WAS UNCERTAIN, AT BEST. 89 ADVISERS TO MR. PIÑERA COUNSELED HIM NOT TO RAISE EXPECTATIONS THAT THEY COULD BE FOUND ALIVE.**

**10/11 LAURENCE GOLBORNE, THE MINING MINISTER, SAID PUBLICLY THAT THEIR CHANCES OF HAVING SURVIVED WERE SLIM, COMMENTS THAT BOTHERED MANY CHILEANS. BUT MR. PIÑERA, WHO WAS IN ECUADOR WHEN THE NEWS CAME OF THE LOST MINERS, ARGUED DIFFERENTLY. “I HAD A STRONG CONVICTION, VERY DEEP INSIDE OF ME, THAT THEY WERE ALIVE, 127 AND THAT WAS A STRONG SUPPORT FOR MY ACTIONS,” HE SAID IN AN INTERVIEW IN LATE AUGUST.**

## BT1 Family

**7 Weights in BT1 Family:**

Thin, Light, Regular, DemiBold, Bold, Heavy, Extra-Condensed Heavy  
 Thin Italic, Light Italic, Italic, DemiBold Italic, Bold Italic, Heavy Italic

BT1 Extra-Condensed Heavy

**12/13 BUT IT HAS PAID BIG DIVIDENDS, BOLSTERING HIS POPULARITY AT HOME AND PROPELLING HIM ONTO AN INTERNATIONAL STAGE OFTEN DOMINATED BY OTHER LARGE PERSONALITIES IN THE REGION. AFTER A CAVE-IN TRAPPED THE MINERS ON AUG. 15, THEIR FATE WAS UNCERTAIN, AT BEST. 89 ADVISERS TO MR. PIÑERA COUNSELED HIM NOT TO RAISE EXPECTATIONS THAT THEY COULD BE FOUND ALIVE.**

**10/11 LAURENCE GOLBORNE, THE MINING MINISTER, SAID PUBLICLY THAT THEIR CHANCES OF HAVING SURVIVED WERE SLIM, COMMENTS THAT BOTHERED MANY CHILEANS. BUT MR. PIÑERA, WHO WAS IN ECUADOR WHEN THE NEWS CAME OF THE LOST MINERS, ARGUED DIFFERENTLY. “I HAD A STRONG CONVICTION, VERY DEEP INSIDE OF ME, THAT THEY WERE ALIVE, 127 AND THAT WAS A STRONG SUPPORT FOR MY ACTIONS,” HE SAID IN AN INTERVIEW IN LATE AUGUST.**

BT1 Extra-Condensed Heavy

**12/13 Понятие амортизи  
Издательство «Галерея»  
выпускает настенные  
календари на скрепке,  
почтовые открытки, на-  
боры открыток и наборы  
карманных календариков с  
видами Санкт-Петербурга и  
его окрестностей (Петергоф,  
Царское Село, Павловск, Гат-  
чина, Кронштадт), а также  
буклеты и путеводители  
по Санкт-Петербургу и его  
пригородам.**

**10/11 Крупнейший из островов  
Санкт-Петербурга - Васильевский,  
площадью 1090 га, омывается  
водами Финского залива,  
Большой Невы и реки Смоленки.  
Петр I предполагал создать  
здесь парадный фасад северной  
столицы с главной площадью  
на восточном мысу - Стрелке  
Васильевского острова.**

**Design:** Jonas Hecksher, 2011  
**Published:** 2011  
**Version no.** 1.001/2011  
**Character set:** PRO

Playtype™ is an online type foundry and concept store, created as a place to play, a home for experimentation and a showcase of our craft.

BT1 Extra-Condensed Heavy

**12/13 Η ελληνική υπήρξε στην  
αρχαιότητα η πιο διαδεδομέ-  
νη γλώσσα στην Μεσόγειο και  
στην Νότια Ευρώπη κυρίως  
εξαιτίας του πλήθους των  
αποικιών που είχαν ιδρυθεί  
από τους Έλληνες στις ακτές  
της Μεσογείου και έφτασε να  
είναι η γλώσσα του εμπορίου  
ακόμα και μέχρι τα τέλη της  
Αλεξανδρινής περιόδου. Η  
ελληνική σήμερα αποτελεί τη  
μητρική γλώσσα περίπου 12  
εκατομμυρίων ανθρώπων**

**10/11 κυρίως στην Ελλάδα και την  
Κύπρο. Αποτελεί επίσης την μητρική  
γλώσσα αυτοχθόνων πληθυσμών  
στην Αλβανία, τη Βουλγαρία, την  
ΠΑΓΜ, την Ιταλία και την Τουρκία.  
Εξαιτίας της μετανάστευσης η  
γλώσσα μιλιέται ακόμα σε χώρες-  
προορισμούς ελληνοφώνων  
πληθυσμών μεταξύ των οποίων η  
Αυστραλία, ο Καναδάς, η Γερμανία,  
το Ηνωμένο Βασίλειο, η Ρωσία, η  
Σερβία και οι Ηνωμένες Πολιτείες.**

BT1 Extra-Condensed Heavy

**12/13 ĐÂY LÀ VĂN BẢN GIẢ. NÓ CÓ  
THỂ DÙNG ĐỂ ĐỌC NHƯNG KHÔNG  
CÓ Ý NGHĨA. LÀ MỘT BẢN SAO  
MÔ PHỎNG THỰC TẾ, SỬ DỤNG  
NHỮNG TỪ THÔNG THƯỜNG VỚI  
TÂN SỐ BỨC THỊ BÌNH THƯỜNG,  
NÓ KHÔNG THỂ ĐÁNH LỬA MẮT  
HOẶC NÃO. GIẢ THIẾT LẬP MÀ SỬ  
DỤNG CÁC NGÔN NGỮ KHÁC HOẶC  
THÂM CHÍ CÒN SAI NGỮ PHÁP ĐỂ  
VĂN BẢN CÓ NHƯỠC ĐIỂM CỐ HỮU  
MÀ HỌ ĐÁNH LẠC SỰ CHÚ Ý ĐỐI VỚI  
BẢN THÂN! SIMULTEXT CÓ THỂ  
CUNG CẤP KIỂU CHỮ NÀO.**

**10/11 Các dân tộc thiểu số có trình độ  
phát triển không đồng đều. Ở Trung  
du và miền núi phía Bắc, các cư dân  
ở vùng thấp như Mường, Thái, Tày,  
Nùng sinh sống chủ yếu bằng canh  
tác lúa nước và nương rẫy, chăn nuôi  
gia súc và gia cầm, có một phần hái  
lượm, săn bắn, có nghề thủ công khá  
tinh xảo. Các dân tộc thiểu số ở phía  
Nam sống biệt lập hơn. Trừ người  
Chăm, Hoa và Khmer sống ở vùng  
duyên hải miền Trung.**

**7 Weights in BT1 Family:**

Thin, Light, Regular, DemiBold, Bold, Heavy, Extra-Condensed Heavy  
Thin Italic, Light Italic, Italic, DemiBold Italic, Bold Italic, Heavy Italic

**Design:** Jonas Hecksher, 2011  
**Published:** 2011  
**Version no.** 1.001/2011  
**Character set:** PRO

Playtype™ is an online type foundry and concept store, created as a place to play,  
a home for experimentation and a showcase of our craft.

36 Point

IN MAY 1995 SCHNEWS REPORTED OUR FEARS ABOUT ID CARDS SCHNEWS24. THIS MAY WE VOICED OUR FEARS AGAIN SCHNEWS 453, AND REPORTED ON THE PROPOSED. CHILDREN'S BILL WHICH WILL CREATE A DATABASE OF EVERY CHILD IN THE COUNTRY SCHNEWS 452. LAST MONTH, ICHARD THOMAS, A BIG FAN OF SCHNEWS AND THE GOVERNMENT'S 'INFORMATION COMMISSIONER' DID AN INTERVIEW IN THE TIMES, IN WHICH HE SAID ALMOST EXACTLY THE SAME STUFF AS WE'VE BEEN SAYING FOR YEARS. HE OUTLINED HIS FEARS THAT BRITAIN COULD BE "SLEEP-WALKING INTO A SURVEILLANCE SOCIETY" AND SPECIFICALLY

## BT1 Family

**7 Weights in BT1 Family:**

Thin, Light, Regular, DemiBold, Bold, Heavy, Extra-Condensed Heavy  
Thin Italic, Light Italic, Italic, DemiBold Italic, Bold Italic, Heavy Italic

**Design:** Jonas Hecksher, 2011  
**Published:** 2011  
**Version no.** 1.001/2011  
**Character set:** PRO

Playtype™ is an online type foundry and concept store, created as a place to play,  
a home for experimentation and a showcase of our craft.

---

**Real3.**